

MARK: \_\_\_\_\_

PROJECT: \_\_\_\_\_

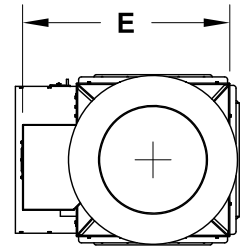
DATE: \_\_\_\_\_



**Vari-Plume®**  
**Laboratory Exhaust**  
**Mixed-Flow Inline**  
**Bifurcated Belt Drive**  
**With 1x1 Mixing Box**

**DIMENSION DATA**

Size	A	B	C	D	E	F	G Height	H	J Width	Unit Weight	
										STD	HP
90	92	28	27 3/16	23	36 11/16	38	10 9/16	8	19 3/4	710	715
120	100	28	27 3/16	28	40 7/16	39	12 13/16	8	19 3/4	805	808
135	108	28	27 1/8	28	41 5/8	40	14 13/16	8	18 9/16	991	944
150	120	30	29 1/8	36	44 1/8	43	16 9/16	8	20 9/16	1093	1104
165	125	32	31 1/8	36	45 1/2	46	18 5/16	8	22 9/16	1231	1256
180	133	34	33 1/8	43	48	48	19 1/16	8	24 9/16	1434	1430
202	143	38	36 15/16	50	51 7/8	54	22 9/16	8	28 9/16	1735	1729
225	154	42	40 15/16	50	58	59	22 9/16	9	30 9/16	1977	1994
245	165	44	42 15/16	61	60 5/8	62	24 13/16	9	32 9/16	2252	2265
270	175	48	46 15/16	61	64 5/8	67	26 9/16	9	36 9/16	2522	2525
300	197	52	50 15/16	74	69 7/16	72	29 13/16	9	40 9/16	3175	3179
330	206	56	54 13/16	74	75 15/16	78	33 1/16	9	44 9/16	3494	3515
365	233	62	60 3/4	89	81 5/8	86	35 1/16	11	46 7/16	4913	5049
402	247	67	65 5/8	89	89 5/16	94	41 5/16	11	50 3/8	5707	5763
445	276	74	72 5/8	89	96 1/8	106	47 1/16	13	55 3/8	6687	6731
490	305	80	78 1/2	101	104 1/16	117	57 5/16	13	59 3/16	10587	10665
540	336	87	85 3/8	101	111 3/8	130	66 1/16	15	62 3/16	12300	12440
600	376	96	94 3/8	101	120 5/16	148	81 9/16	15	69 3/16	14754	14881



ALL DIMENSIONS IN INCHES. WEIGHTS IN LBS., LESS MOTOR.  
 \* RECOMMENDED CURB OUTSIDE SQUARE DIMENSION.  
 \*\* MIXING BOX INSIDE SQUARE DIMENSION.  
 \*\*\* DIMENSION IS FROM THE BOTTOM OF THE CURB CAP TO THE TOP OF THE CURB.

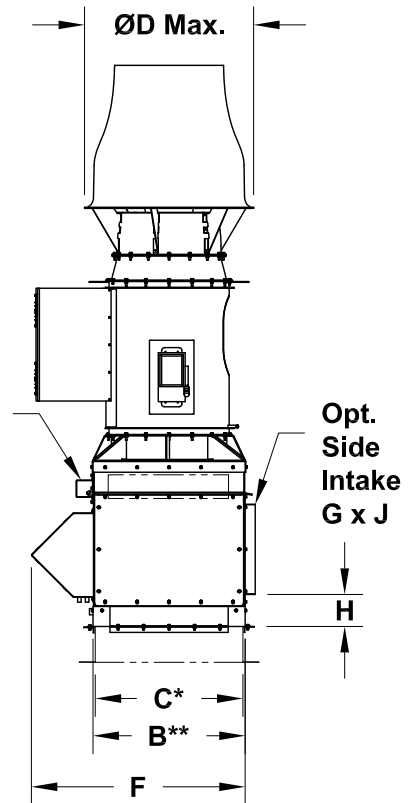
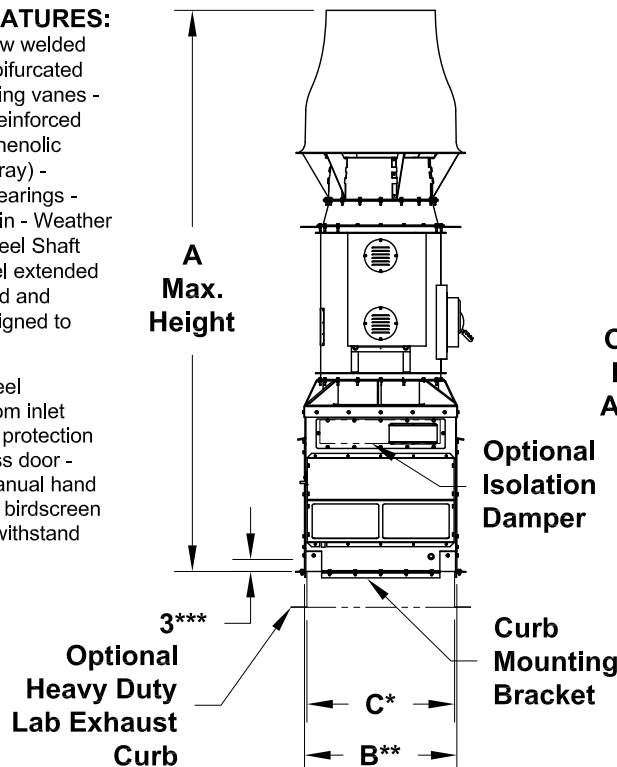
**STANDARD CONSTRUCTION FEATURES:**

High efficiency, non-overloading mixed-flow welded wheel - Minimum 14 gauge steel welded bifurcated housing - Welded aerodynamic straightening vanes - Double concentric accelerator fiberglass reinforced plastic induction nozzle and windband - Phenolic epoxy powder with UV protection (Light Gray) - L10/40k Concentric locking regreasable bearings - Bolted access door - Lifting lugs - Fan drain - Weather cover - Reinforced curb cap - Stainless Steel Shaft - Stainless Steel hardware - Stainless Steel extended lube lines - NEMA 3R disconnect mounted and pre-wired - 1.5 Service factor drives - Designed to withstand 125 mph wind\*\*\*\*

**BYPASS PLENUM:** Single wall welded steel construction with inner angle frame - Bottom inlet location - Phenolic epoxy powder with UV protection (Light Gray) - Plenum drain - Bolted access door - Painted aluminum bypass damper with manual hand quadrant - Weather hood - Stainless steel birdscreen - Stainless Steel hardware - Designed to withstand 125 mph wind\*\*\*\*

**OPTIONAL FEATURES SHOWN:**

Heavy Duty Lab Exhaust Curb  
 Side Intake Opening  
 Isolation Damper  
 Damper Actuator



NOT INTENDED TO BE SUPPORTED BY TRADITIONAL SHEETMETAL ROOF CURB, BUT BY INTEGRAL MEMBERS OF ROOF STRUCTURE.

\*\*\*\* WINDLOAD RATING DEPENDANT ON ADEQUATE ATTACHMENT TO ROOF STRUCTURE.