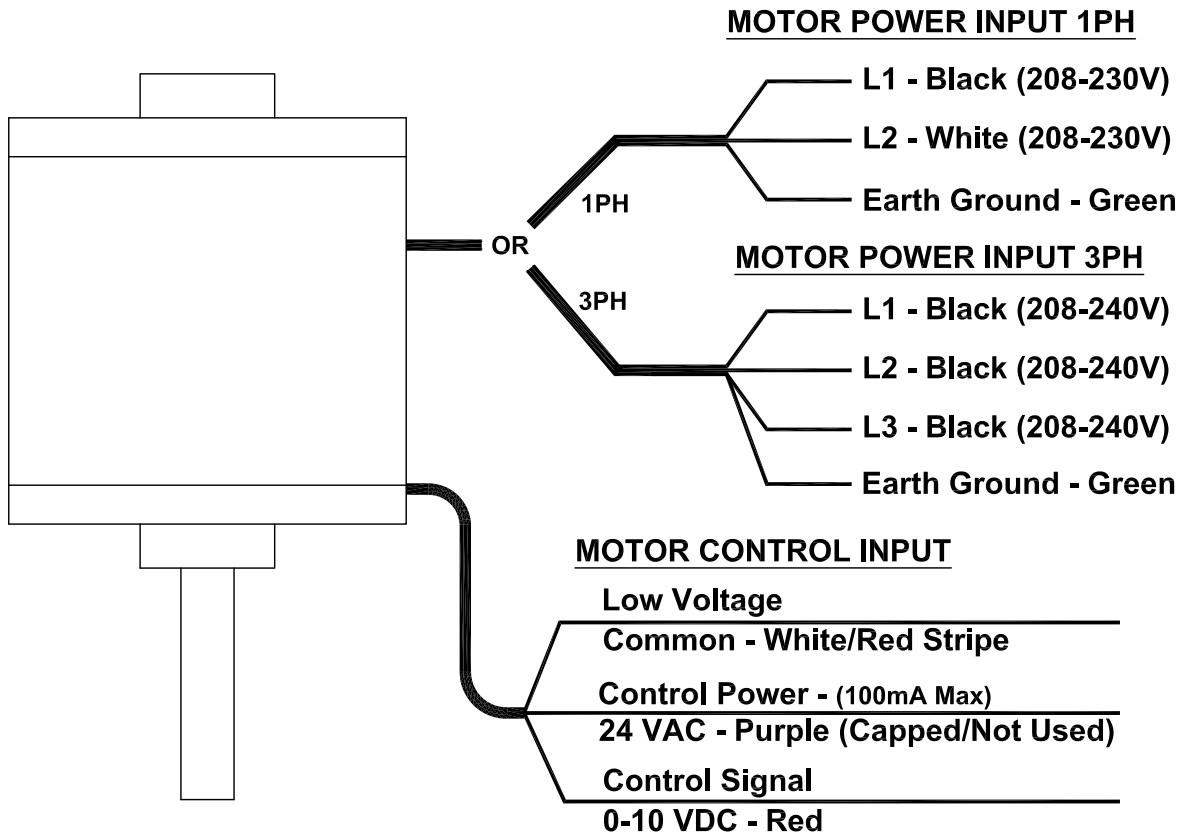


MARK: \_\_\_\_\_

PROJECT: \_\_\_\_\_

DATE: \_\_\_\_\_

**Accessory Data Sheet**  
**External Speed Control**  
**Electronically Commutated (EC) Motor**  
**Type T**



**STANDARD CONSTRUCTION FEATURES:**

Motor has an adjustable speed range of 350 to 1800 - External signal speed control requires a 0-10 VDC control signal to adjust speed of the motor.