

MARK: _____

PROJECT: _____

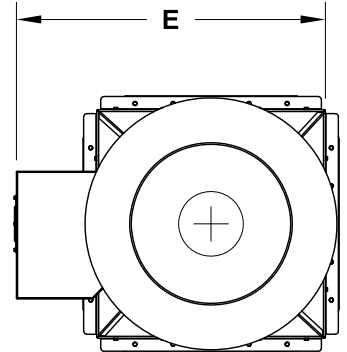
DATE: _____



Vari-Plume®
Laboratory Exhaust
Mixed-Flow Inline
Bifurcated Belt Drive

DIMENSION DATA

Size	A	B	C	D	E	Unit Weight	
						STD	HP
90	65 3/4	28	27 3/16	24 7/16	36 11/16	304	309
120	79 7/8	28	27 3/16	32 9/16	40 7/16	397	399
135	86 7/16	28	27 1/8	36 11/16	41 5/8	506	507
150	85 3/4	30	29 1/8	38 5/16	44 1/8	492	494
165	93 1/2	32	31 1/8	42 1/8	45 1/2	596	608
180	102 1/8	34	33 1/8	46	48	757	767
202	111 9/16	38	36 15/16	51 3/4	51 7/8	939	952
225	122 1/2	42	40 15/16	57 1/2	58	1083	1114
245	132 3/8	44	42 15/16	62 9/16	60 5/8	1315	1337
270	129 3/8	48	46 15/16	66 3/8	64 5/8	1529	1545
300	144 7/16	52	50 15/16	73 3/4	69 7/16	1869	1889
330	157	56	54 13/16	81 1/8	75 15/16	2345	2371
365	171 7/8	62	60 3/4	89 3/4	81 5/8	3159	3215
402	186 7/16	67	65 5/8	98 15/16	89 5/16	3937	3995
445	205 3/8	74	72 5/8	109 3/8	96 1/8	4713	4762
490	224 15/16	80	78 1/2	120 7/16	104 1/16	7616	7691
540	242 7/8	87	85 3/8	132 3/4	111 3/8	8884	9024
600	273	96	94 3/8	147 1/2	120 5/16	10689	10863



ALL DIMENSIONS IN INCHES, WEIGHTS IN LBS LESS MOTOR

* RECOMMENDED CURB OUTSIDE SQUARE DIMENSION.

** CURB CAP INSIDE SQUARE DIMENSION.

*** DIMENSION IS FROM THE BOTTOM OF THE CURB CAP TO THE TOP OF THE CURB.

STANDARD CONSTRUCTION FEATURES:

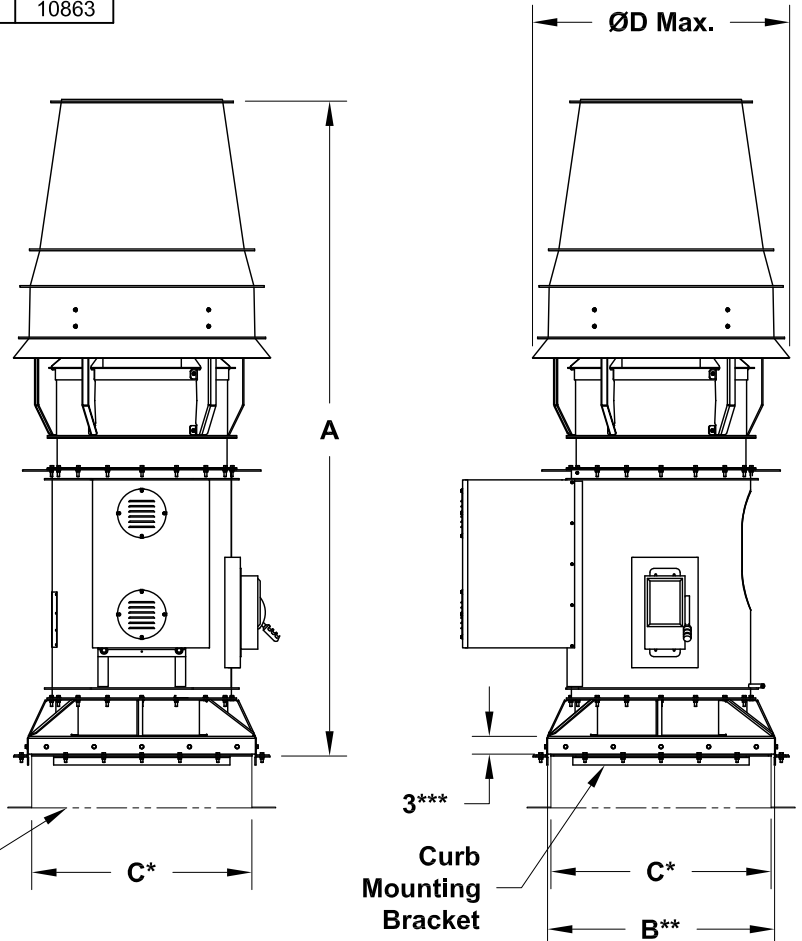
High efficiency, non-overloading mixed-flow welded wheel - Minimum 14 gauge steel welded bifurcated housing - Welded aerodynamic straightening vanes - Double concentric accelerator with welded aluminum induction nozzle and windband - Phenolic epoxy powder with UV protection (Light Gray) - L10/40k Concentric locking regreasable bearings - Bolted access door - Lifting lugs - Fan drain - Weather cover - Reinforced curb cap - Inlet duct collar - Stainless Steel shaft - Stainless Steel hardware - Stainless Steel extended lube lines - NEMA 3R disconnect mounted and pre-wired - 1.5 Service factor drives - Designed to withstand 125 mph wind****

OPTIONAL FEATURES SHOWN:

Heavy Duty Lab Exhaust Curb

NOT INTENDED TO BE SUPPORTED BY TRADITIONAL SHEETMETAL ROOF CURB, BUT BY INTEGRAL MEMBERS OF ROOF STRUCTURE.

**** WINDLOAD RATING DEPENDANT ON ADEQUATE ATTACHMENT TO ROOF STRUCTURE.



Optional Heavy Duty Lab Exhaust Curb

3***
 Curb Mounting Bracket