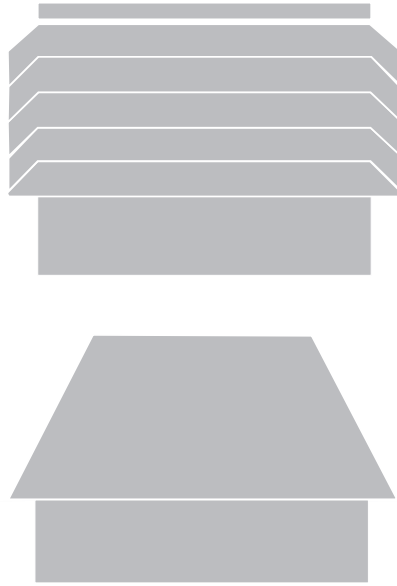


LC

Low Contour Power Roof Ventilators



	Page
Introduction	2
Standard Construction Features	3
Specifications and Dimension Data	
TLC-D (Tiered Low-Contour Power Roof Ventilator - Direct Drive)	4
TLC-B (Tiered Low-Contour Power Roof Ventilator - Belt Drive)	5
HLC-D (Hooded Low-Contour Power Roof Ventilator - Direct Drive)	6
HLC-B (Hooded Low-Contour Power Roof Ventilator - Belt Drive)	7
Accessories and Options	
Accessories	8-11
Other Available Products	12

INTRODUCTION

Loren Cook Company's LC Power Roof Ventilators have been designed to provide a low silhouette for clean architectural lines.

TLC

Tiered Centrifugal Exhaust Ventilator



- Constructed with extruded aluminum louvered design that is architecturally pleasing.
- TLC is available in 8 direct drive sizes and 18 belt drive sizes. Capacities range from 100 to 43,500, with static pressure from 0 to 2 inches.

HLC

Hooded Centrifugal Exhaust Ventilator

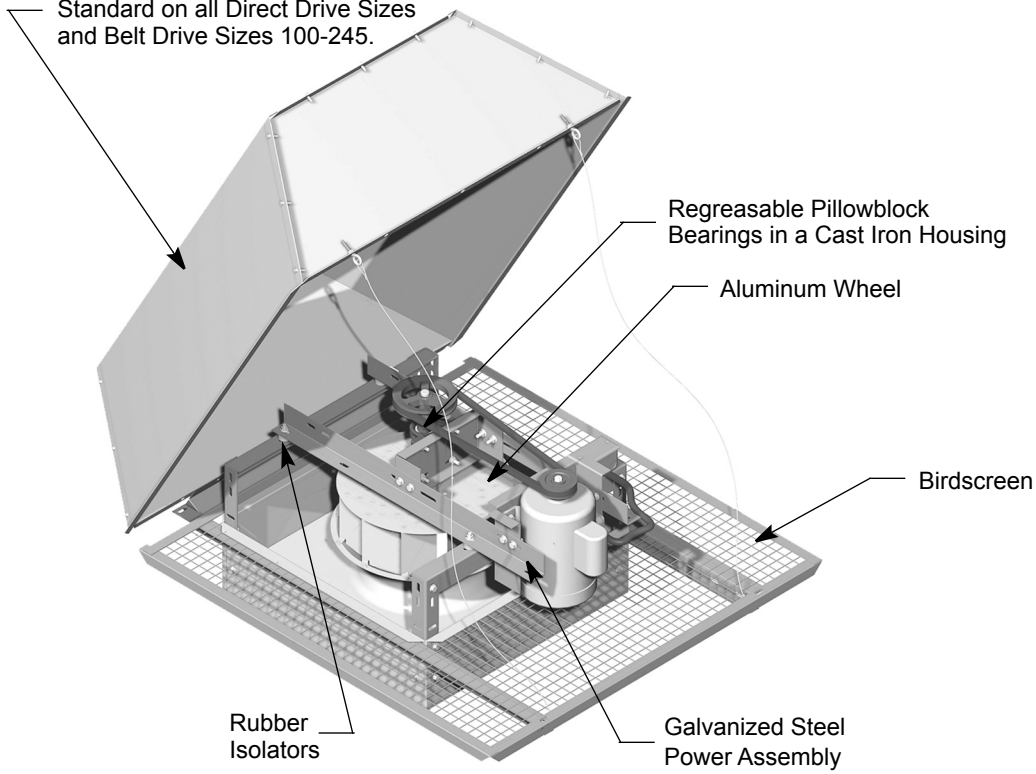


- HLC-D, sizes 70-180, and the HLC-B, sizes 100-245 are constructed with a hinged aluminum hood. HLC-B, size 270-540 aluminum hood is designed with a removable top for easy access.
- HLC is available in 8 direct drive sizes and 18 belt drive sizes. Capacities range from 100 to 42,600, with static pressure from 0 to 2 inches.

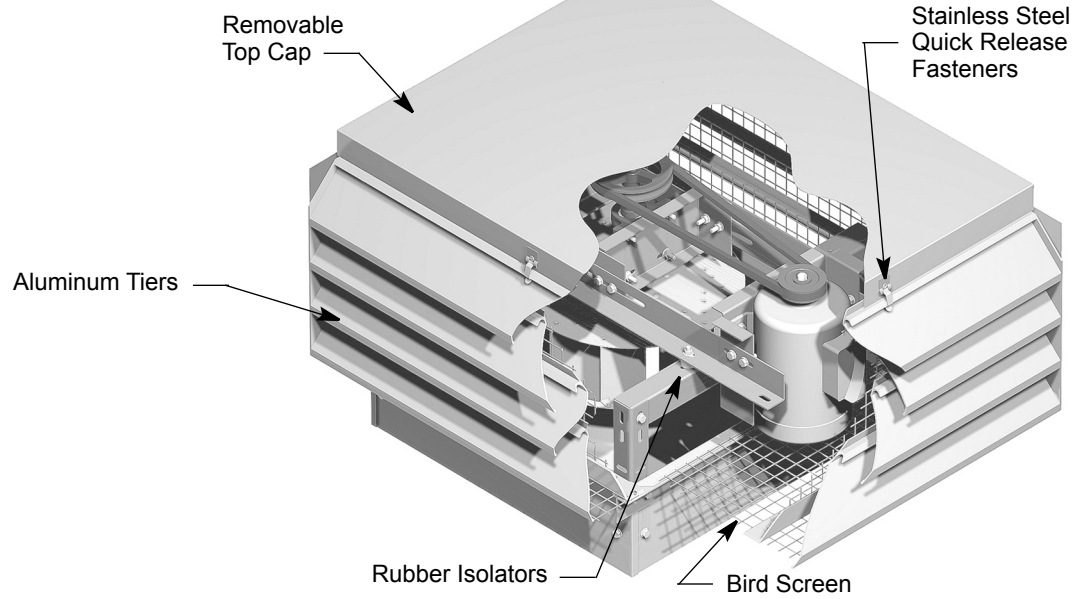
STANDARD CONSTRUCTION FEATURES

HLC

Hinged Hood (Aluminum)
Standard on all Direct Drive Sizes
and Belt Drive Sizes 100-245.



TLC



TLC-D Specifications and Dimension Data

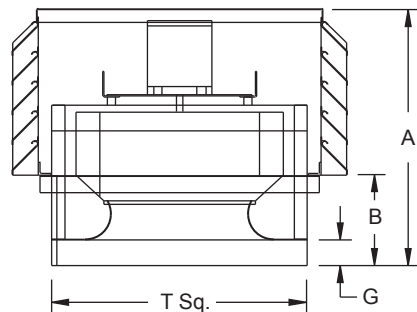
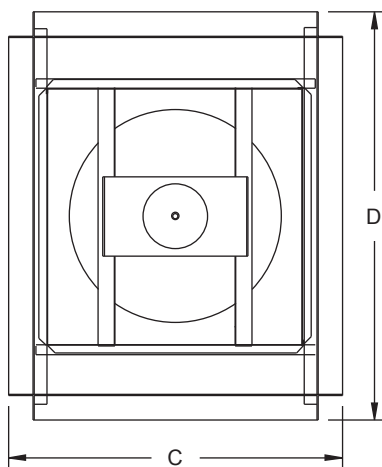
Tiered Low-Contour Power Roof Ventilator Direct Drive



Loren Cook Company certifies that the TLC-D shown herein is licensed to bear the AMCA Seal. The ratings shown are based on tests and procedures performed in accordance with AMCA Publication 211 and AMCA Publication 311 and comply with the requirements of the AMCA Certified Ratings Program.



Type TLC-D is furnished standard with UL 705 and cUL 705 listing (Power Ventilator/ZACT) when furnished with factory supplied motor.



Description - Fan shall be a tiered aluminum, low profile, roof mounted, direct driven, downblast centrifugal exhaust ventilator.

Certifications - Fan shall be manufactured at an ISO 9001 certified facility. Fan shall be listed by Underwriters Laboratories (UL 705) and UL listed for Canada (cUL 705). Fan shall bear the AMCA Certified Ratings Seal for Sound and Air Performance.

Construction - The fan shall be of bolted and welded construction utilizing corrosion resistant fasteners. The fan shall be enclosed in a tiered extruded aluminum housing. The aluminum base shall have continuously welded curb cap corners for maximum leak protection. Motor shall be mounted on a minimum 12 gauge steel power assembly, isolated from the unit structure with rubber vibration isolators. Unit shall bear an engraved aluminum nameplate. Nameplate shall indicate design CFM and static pressure. Unit shall be shipped in ISTA Certified Transit Tested Packaging.

Wheel - Wheel shall be centrifugal backward inclined, constructed of 100% aluminum, including a precision machined cast aluminum hub. An aerodynamic aluminum inlet cone shall be provided for maximum performance and efficiency. Wheel shall be balanced in accordance with AMCA Standard 204-05, Balance Quality and Vibration Levels for Fans.

Motor - Motor shall be heavy duty type with permanently lubricated sealed bearings and furnished at the specified voltage, phase and enclosure.

Product - Fan shall be model TLC-D as manufactured by Loren Cook Company of Springfield, Missouri.

TLC-D Dimension Data

Size	A Dia.	B	C	D	G	T Sq.	Approx. Ship. Wt. - Lbs.	Roof Opening Sq.*
70	16-7/8	4-1/4	27-1/2	36-1/4	2	18	75	13-1/2
90	17-3/8	4-3/4	27-1/2	36-1/4	2	18	80	13-1/2
100	17-3/8	4-3/4	27-1/2	36-1/4	2	18	80	13-1/2
120	22-1/2	5-7/8	29-1/2	37-1/4	2	20	170	15-1/2
135	22-3/4	6-1/8	29-1/2	37-1/4	2	20	170	15-1/2
150	23-7/8	7-1/4	33-1/2	42-1/4	2	24	200	19-1/2
165	24	7-3/8	33-1/2	42-1/4	2	24	200	19-1/2
180	28-3/8	8-1/4	39-5/8	51-1/2	3	30	240	25-1/2

All dimensions in inches. Weights in pounds. *Roof opening size for curbs supplied by Loren Cook Company only.

Description - Fan shall be a tiered aluminum, low profile, roof mounted, belt driven, centrifugal exhaust ventilator.

Certifications - Fan shall be manufactured at an ISO 9001 certified facility. Fan shall be listed by Underwriters Laboratories (UL 705) and UL listed for Canada (cUL 705). Fan shall bear the AMCA Certified Ratings Seal for Sound and Air Performance.

Construction - The fan shall be of bolted and welded construction utilizing corrosion resistant fasteners. The fan shall be enclosed in a tiered extruded aluminum housing. The aluminum base shall have continuously welded curb cap corners for maximum leak protection. Bearings, drives and motor shall be mounted on a minimum 12 gauge steel power assembly, isolated from the unit structure with rubber vibration isolators. Unit shall bear an engraved aluminum nameplate. Nameplate shall indicate design CFM, static pressure and maximum fan RPM. Unit shall be shipped in ISTA Certified Transit Tested Packaging.

Wheel - Wheel shall be centrifugal backward inclined, constructed of 100% aluminum, including a precision machined cast aluminum hub. Wheel inlet shall overlap an aerodynamic aluminum inlet cone to provide maximum performance and efficiency. Wheel shall be balanced in accordance with AMCA Standard 204-05, Balance Quality and Vibration Levels for Fans.

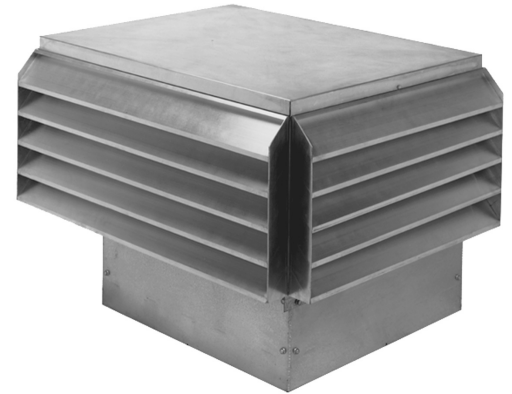
Motor - Motor shall be Nema design B with class B insulation rated for continuous duty and furnished at the specified voltage, phase and enclosure.

Bearings - Bearings shall be designed and individually tested specifically for use in air handling applications. Construction shall be heavy duty regreasable ball type in a cast iron housing selected for a minimum L50 life in excess of 200,000 hours at maximum cataloged operating speed.

Belts and Drives - Belts shall be oil and heat resistant, non-static type. Drives shall be precision machined cast iron type, keyed and securely attached to the wheel and motor shafts. Drives shall be sized for 150% of the installed motor horsepower. The variable pitch motor drive must be factory set to the specified fan RPM.

Product - Fan shall be model TLC-B as manufactured by Loren Cook Company of Springfield, Missouri.

Tiered Low-Contour Power Roof Ventilator Belt Drive



Loren Cook Company certifies that the TLC-B shown herein is licensed to bear the AMCA Seal. The ratings shown are based on tests and procedures performed in accordance with AMCA Publication 211 and AMCA Publication 311 and comply with the requirements of the AMCA Certified Ratings Program.

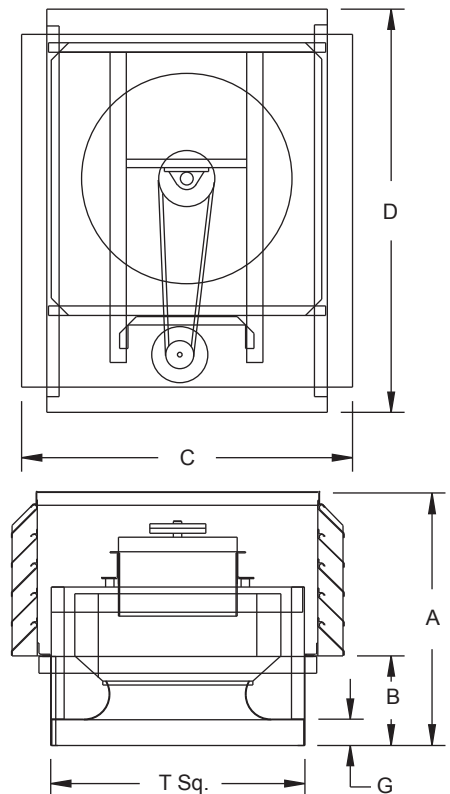


Type TLC-B is furnished standard with UL 705 and cUL 705 listing (Power Ventilator/ZACT) when furnished with factory supplied motor.

TLC-B Dimension Data

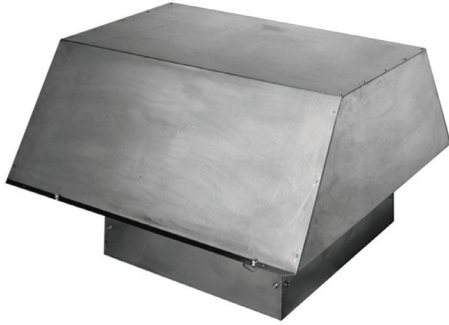
Size	A	B	C	D	G	T Sq.	Approx. Ship Wt.** Lbs.	Roof Opening Sq.*
100	17-7/8	5-1/4	27-1/2	36-1/4	2	18	77	13-1/2
120	22-1/2	5-7/8	29-1/2	37-1/4	2	20	175	15-1/2
135	22-3/4	5-7/8	29-1/2	37-1/4	2	20	175	15-1/2
150	23-7/8	7-3/8	33-1/2	42-1/4	2	24	205	19-1/2
165	24	7-3/8	33-1/2	42-1/4	2	24	205	19-1/2
180	28-3/8	8-1/4	39-5/8	51-1/2	3	30	245	25-1/2
195	29-1/8	9-1/4	39-5/8	51-1/2	3	30	245	25-1/2
210	29-3/8	9-1/4	39-5/8	51-1/2	3	30	280	25-1/2
225	30-1/8	10	39-5/8	51-1/2	3	30	285	25-1/2
245	30-3/4	10-5/8	39-5/8	51-1/2	3	30	290	25-1/2
270	34-5/8	11	45-7/8	60-1/4	3	36	385	31-1/2
300	35-3/4	12-1/8	45-7/8	60-1/4	3	36	405	31-1/2
330	40-1/4	13-1/8	53	66-1/4	3	42	475	37-1/2
365	41-1/8	14	53	66-1/4	3	42	485	37-1/2
402	48-3/8	14-1/4	59	73-1/4	3	48	565	43-1/2
445	49-5/8	16-1/2	65	79-1/4	3	54	635	49-1/2
490	51-1/8	18	65	79-1/4	3	54	635	49-1/2
540	49-3/4	13-5/8	77	91-1/4	3	66	790	61-1/2

All dimensions in inches. Weights in pounds, less motor. *Roof opening size for curbs supplied by Loren Cook Company only. **Less motor and drives.



HLC-D Specifications and Dimension Data

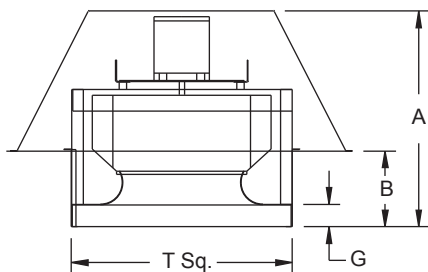
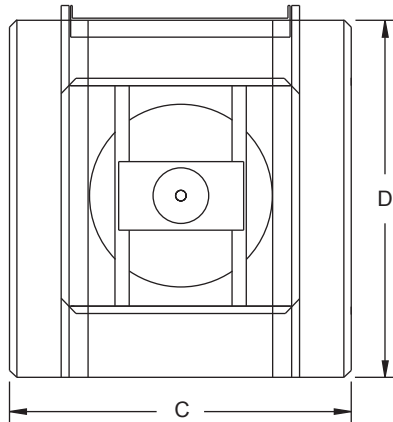
Hooded Low-Contour Power Roof Ventilator Direct Drive



Loren Cook Company certifies that the HLC-D shown herein is licensed to bear the AMCA Seal. The ratings shown are based on tests and procedures performed in accordance with AMCA Publication 211 and AMCA Publication 311 and comply with the requirements of the AMCA Certified Ratings Program.



Type HLC-D is furnished standard with UL 705 and cUL 705 listing (Power Ventilator/ZACT) when furnished with factory supplied motor.



Description - Fan shall be a hooded, low profile, roof mounted, direct driven, down-blast centrifugal exhaust ventilator.

Certifications - Fan shall be manufactured at an ISO 9001 certified facility. Fan shall be listed by Underwriters Laboratories (UL 705) and UL listed for Canada (cUL 705). Fan shall bear the AMCA Certified Ratings Seal for Sound and Air Performance.

Construction - The fan shall be of bolted and welded construction utilizing corrosion resistant fasteners. The fan shall be enclosed with a minimum .064 aluminum hood bolted to the fan housing. The hood shall be removable to allow unobstructed access to the motor and power assembly. The aluminum base shall have continuously welded curb cap corners for maximum leak protection. Motor shall be mounted on a minimum 12 gauge steel power assembly, isolated from the unit structure with rubber vibration isolators. Unit shall bear an engraved aluminum nameplate. Nameplate shall indicate design CFM and static pressure. Unit shall be shipped in ISTA Certified Transit Tested Packaging.

Wheel - Wheel shall be centrifugal backward inclined, constructed of 100% aluminum, including a precision machined cast aluminum hub. An aerodynamic aluminum inlet cone shall be provided for maximum performance and efficiency. Wheel shall be balanced in accordance with AMCA Standard 204-05, Balance Quality and Vibration Levels for Fans.

Motor - Motor shall be heavy duty type with permanently lubricated sealed bearings and furnished at the specified voltage, phase and enclosure.

Product - Fan shall be model HLC-D as manufactured by Loren Cook Company of Springfield, Missouri.

HLC-D Dimension Data

Size	A	B	C	D	G	T Sq.	Shipping Weight Lbs.	Roof Opening Sq.*
70	16-1/2	4-1/4	31-1/4	34-1/8	2	18	70	13-1/2
90	17	4-3/4	31-1/4	34-1/8	2	18	85	13-1/2
100	17	4-3/4	31-1/4	34-1/8	2	18	85	13-1/2
120	19-5/8	5-7/8	34-3/4	35-1/8	2	20	165	15-1/2
135	19-7/8	6-1/8	34-3/4	35-1/8	2	20	165	15-1/2
150	21-1/4	7-1/4	40-1/8	42-1/8	2	24	190	19-1/2
165	21-3/8	7-3/8	40-1/8	42-1/8	2	24	190	19-1/2
180	26-1/4	8-1/4	43-7/8	47-1/8	3	30	220	25-1/2

All dimensions in inches. Weights in pounds. *Roof opening size for curbs supplied by Loren Cook Company only.

Description - Fan shall be a hooded, low profile, roof mounted, belt driven, down-blast centrifugal exhaust ventilator.

Certifications - Fan shall be manufactured at an ISO 9001 certified facility. Fan shall be listed by Underwriters Laboratories (UL 705) and UL listed for Canada (cUL 705). Fan shall bear the AMCA Certified Ratings Seal for Sound and Air Performance.

Construction - The fan shall be of bolted and welded construction utilizing corrosion resistant fasteners. The fan shall be enclosed with a minimum .064 aluminum hood bolted to the fan housing. The hood shall be removable to allow unobstructed access to the motor and power assembly. The aluminum base shall have continuously welded curb cap corners for maximum leak protection. Bearings and drives shall be mounted on a minimum 12 gauge steel power assembly, isolated from the unit structure with rubber vibration isolators. Unit shall bear an engraved aluminum nameplate. Nameplate shall indicate design CFM, static pressure and maximum fan RPM. Unit shall be shipped in ISTA Certified Transit Tested Packaging.

Wheel - Wheel shall be centrifugal backward inclined, constructed of 100% aluminum, including a precision machined cast aluminum hub. Wheel inlet shall overlap an aerodynamic aluminum inlet cone to provide maximum performance and efficiency. Wheel shall be balanced in accordance with AMCA Standard 204-05, Balance Quality and Vibration Levels for Fans.

Motor - Motor shall be Nema design B with class B insulation rated for continuous duty and furnished at the specified voltage, phase and enclosure.

Bearings - Bearings shall be designed and individually tested specifically for use in air handling applications. Construction shall be heavy duty regreasable ball type in a cast iron housing selected for a minimum L50 life in excess of 200,000 hours at maximum cataloged operating speed.

Belts and Drives - Belts shall be oil and heat resistant, non-static type. Drives shall be precision machined cast iron type, keyed and securely attached to the wheel and motor shafts. Drives shall be sized for 150% of the installed motor horsepower. The variable pitch motor drive must be factory set to the specified fan RPM.

Product - Fan shall be model HLC-B as manufactured by Loren Cook Company of Springfield, Missouri.

Hooded Low-Contour Power Roof Ventilator Belt Drive



Loren Cook Company certifies that the HLC-B shown herein is licensed to bear the AMCA Seal. The ratings shown are based on tests and procedures performed in accordance with AMCA Publication 211 and AMCA Publication 311 and comply with the requirements of the AMCA Certified Ratings Program.

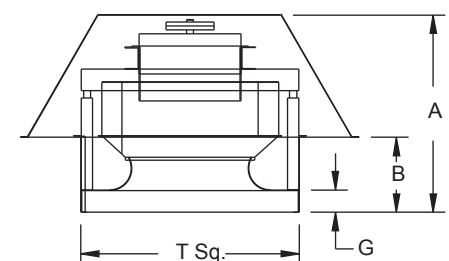
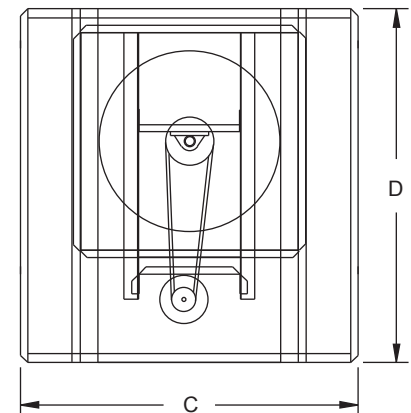


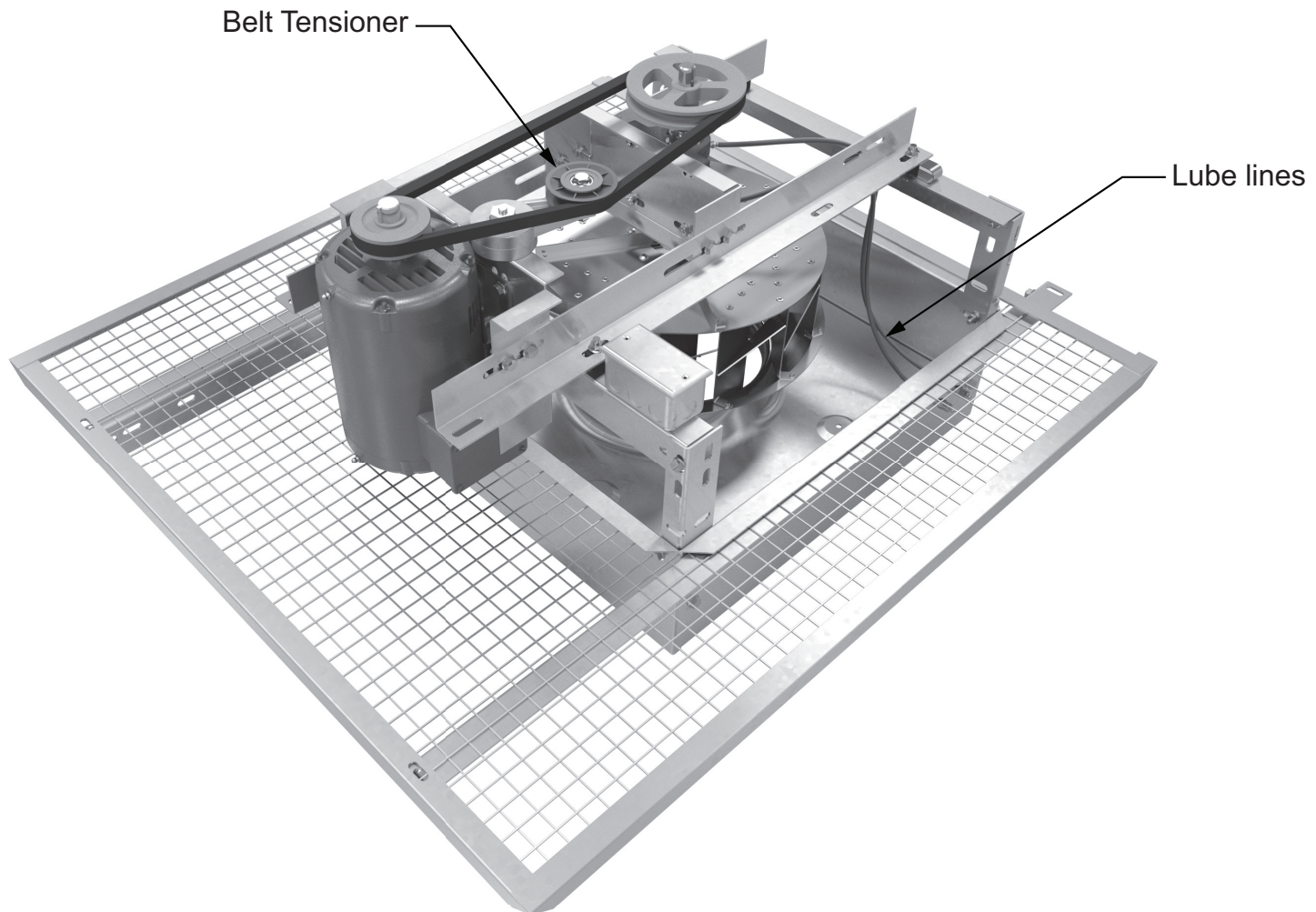
Type HLC-B is furnished standard with UL 705 and cUL 705 listing (Power Ventilator/ZACT) when furnished with factory supplied motor.

HLC-B Dimension Data

Size	A	B	C	D	G	T Sq.	Approx. Ship Wt.** Lbs.	Roof Opening Sq.*
100	17-1/2	5-1/4	31-1/4	34-1/8	2	18	70	13-1/2
120	19-5/8	5-7/8	34-3/4	35-1/8	2	20	170	15-1/2
135	19-7/8	5-7/8	34-3/4	35-1/8	2	20	170	15-1/2
150	21-1/4	7-3/8	40-1/8	42-1/8	2	24	195	19-1/2
165	21-3/8	7-3/8	40-1/8	42-1/8	2	24	195	19-1/2
180	26-1/4	8-1/4	43-7/8	47-1/8	3	30	225	25-1/2
195	27	9-1/4	43-7/8	47-1/8	3	30	225	25-1/2
210	28-1/4	9-1/4	46-5/8	49-1/8	3	30	260	25-1/2
225	29	10	46-5/8	49-1/8	3	30	265	25-1/2
245	29-5/8	10-5/8	46-5/8	49-1/8	3	30	275	25-1/2
270	32-1/4	11	58-1/8	58-1/8	3	36	365	31-1/2
300	33-3/8	12-1/8	58-1/8	58-1/8	3	36	375	31-1/2
330	35-3/8	13-1/8	65	65	3	42	435	37-1/2
365	36-1/4	14	65	65	3	42	450	37-1/2
402	43-1/2	14-1/4	82-7/8	78-1/8	3	48	540	43-1/2
445	44-3/4	16-1/2	82-7/8	78-1/8	3	54	600	49-1/2
490	46-1/4	18	82-7/8	78-1/8	3	54	625	49-1/2
540	45-7/8	13-5/8	96	98	3	66	750	61-1/2

All dimensions in inches. *Roof opening size for curbs supplied by Loren Cook Company only. **Less motor and drives.





Automatic Belt Tensioner

Proper Belt Tension

Cook's automatic belt tensioner eliminates the need for regular manual retensioning of fan belts. The Risk of inadvertently over-tensioning drive components is avoided and overall drive operating efficiency is enhanced.

Longer Belt Life

Engineering studies indicate properly tensioned belts can operate at 15° to 20° F cooler internal temperature than poorly tensioned belts. A drive belt industry rule of thumb is that 18° F increase in internal temperature will reduce belt life by 50%. The automatic belt tensioner will easily double belt life compared to installations where belt is not properly maintained.

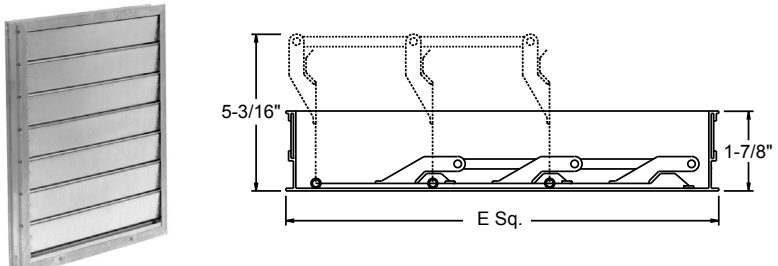
Longer Bearing Life and Smoother Running Fans

Too much belt tension can reduce the life of both the fan and motor bearings. The Cook automatic belt tensioner will assure proper belt tension throughout the life of the fan; maximizing bearing life and fan reliability.

Extended Lube Lines

Cook's extended lube lines provide an external location to easily lubricate the internal bearings of the unit. This allows for maintenance of the unit without the need of tools. Extended lube lines are factory pre-charged with lubricant. They come assembled to the bearing and housing utilizing corrosion resistant brass fittings. Bearings should be lubricated in accordance with the lubrication intervals chart in the Installation, Operation, and Maintenance manual. Standard lines are high pressure polyethylene tubing for ambient air. Optional copper and stainless steel are available.

Gravity Backdraft Damper

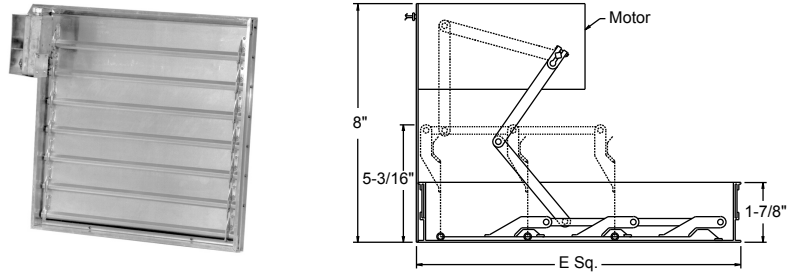


Gravity dampers feature an extruded aluminum frame, aluminum blades and aluminum hinge pins with nylon bushings.

Unit Size	Catalog Number	E Sq.
60, 70, 80, 90, 100	BD-12	11-3/4
120, 135	BD-14	13-3/4
150, 165	BD-18	17-3/4
180, 195, 210, 225, 245	BD-24	23-3/4
270, 300	BD-30	29-3/4
330, 365	BD-36	35-3/4
402	BD-42	41-3/4
445, 490	BD-48	47-3/4
540	BD-60	59-3/4

All dimensions in inches.

Motorized Backdraft Damper

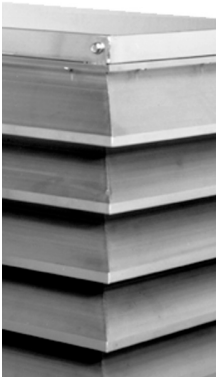


Motorized dampers feature an extruded aluminum frame, aluminum blades and aluminum hinge pins with nylon bushings. Motors are shipped loose for field installation. Available voltages include 110V, 220V, and 440V.

Unit Size	Catalog Number	E Sq.
60, 70, 80, 90, 100	BDM-12	11-3/4
120, 135	BDM-14	13-3/4
150, 165	BDM-18	17-3/4
180, 195, 210, 225, 245	BDM-24	23-3/4
270, 300	BDM-30	29-3/4
330, 365	BDM-36	35-3/4
402	BDM-42	41-3/4
445, 490	BDM-48	47-3/4
540	BDM-60	59-3/4

All dimensions in inches.

Mitered Corners



Mitered corners are available on the TLC to enhance the architectural look of the fan.

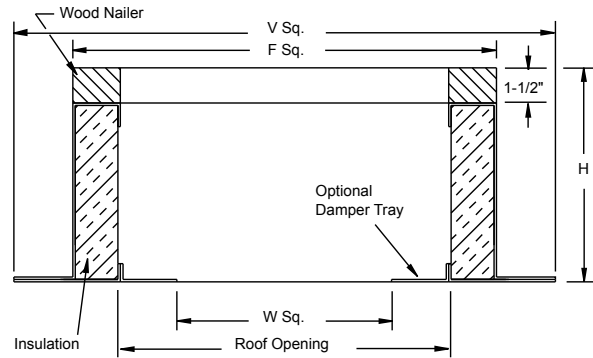
Typical Disconnect Switches



- NEMA 1** - Indoor general purpose.
- NEMA 1 (Lockable)** - Indoor general purpose with locking capability.
- NEMA 1 (Heavy Duty, Lockable)** - Indoor heavy duty visible blade.
- NEMA 3R** - Exterior mount, rain-tight.
- NEMA 4** - Water-tight and dust-tight.
- NEMA 7 and NEMA 9** - Lockable, indoor, explosion proof.

ACCESSORIES

Roof Curb



Standard Construction Features

- 18 gauge galvanized steel (RCG) or .080 aluminum (RCA).
- 1-1/2", 3 lbs. density thermal and acoustical insulation.
- Continuously welded corners.
- Wood nailer.

Options

- Damper tray.
- No wood nailer (deduct 1-1/2" for actual height).
- 13-1/2" tall construction.

Galvanized Steel or Aluminum Roof Curb Dimension Data

Unit Size	Catalog Number		F Sq.	H	V Sq.	W Sq.	Roof Opening
	Galvanized	Aluminum					
60, 70, 80, 90, 100	RCG-16	RCA-16	16-1/2	9-1/2	20-1/2	9-3/4	13-1/2
120, 135	RCG-18	RCA-18	18-1/2	9-1/2	22-1/2	11-3/4	15-1/2
150,165	RCG-22	RCA-22	22-1/2	9-1/2	26-1/2	15-3/4	19-1/2
180, 195, 210, 225, 245	RCG-28	RCA-28	28-1/2	9-1/2	32-1/2	21-3/4	25-1/2
270, 300	RCG-34	RCA-34	34-1/2	9-1/2	38-1/2	27-3/4	31-1/2
330, 365	RCG-40	RCA-40	40-1/2	9-1/2	44-1/2	33-3/4	37-1/2
402	RCG-46	RCA-46	46-1/2	9-1/2	50-1/2	39-3/4	43-1/2
445, 490	RCG-52	RCA-52	52-1/2	9-1/2	56-1/2	45-3/4	49-1/2
540	RCG-64	RCA-64	64-1/2	9-1/2	68-1/2	56-3/4	61-1/2

All dimensions in inches. When motor operated damper is used, a wood nailer is required. Roof curb is not hurricane resistant rated.

Sound Attenuator Curb Dimension Data

Unit Size	Catalog Number		F Sq.	H*	V Sq.	W Sq.	Roof Opening
	Galvanized	Aluminum					
60, 70, 80, 90, 100	RCG-AT-16	RCA-AT-16	16-1/2	16	20-1/2	9-3/4	13-1/2
120, 135	RCG-AT-18	RCA-AT-18	18-1/2	16	22-1/2	11-3/4	15-1/2
150,165	RCG-AT-22	RCA-AT-22	22-1/2	16	26-1/2	15-3/4	19-1/2
180, 195, 210, 225, 245	RCG-AT-28	RCA-AT-28	28-1/2	16	32-1/2	21-3/4	25-1/2
270, 300	RCG-AT-34	RCA-AT-34	34-1/2	16	38-1/2	27-3/4	31-1/2
330, 365	RCG-AT-40	RCA-AT-40	40-1/2	16	44-1/2	33-3/4	37-1/2
402	RCG-AT-46	RCA-AT-46	46-1/2	16	50-1/2	39-3/4	43-1/2
445, 490	RCG-AT-52	RCA-AT-52	52-1/2	16	56-1/2	45-3/4	49-1/2
540	RCG-AT-64	-	64-1/2	16	68-1/2	56-3/4	61-1/2

All dimensions in inches. When motor operated damper is used, a wood nailer is required. *Add 8" when installed with a damper. Roof curb is not hurricane resistant rated.

Average Sound Level Reduction

OB1	OB2	OB3	OB4	OB5	OB6	OB7	OB8
-5	-11	-9	-14	-18	-28	-35	-25

Fan Speed Control



5 AMP FSC

10 AMP FSC

Cook's FSC is a variable speed controller which can offer excellent energy conservation and lower sound levels when 100 percent of a direct drive fan operating capacity is not required. The FSC employs solid state circuitry for long-life and dependability. The FSC is available only on 115V and 230V shaded pole or permanent split capacitor direct drive motors and is not available on 1140 RPM and 1725 RPM motors. The FSC is normally shipped loose for field installation. Optional pre-wiring is available.

Motors

Direct Drive

All direct drive motors are standard single phase 115-volt:

- Sizes 70 through 100 are either shaded pole or permanent split capacitor type motors.
- Sizes 120 through 180 are either permanent split capacitor (1075, 1300, or 1550 rpm motors) or split phase (1140 or 1725 rpm motors).
- FSC can only be used on either shaded pole or permanent split capacitor type motors.

Optional motors:

- Two speed, single-phase open motors are supplied as either 1725/1140 RPM or as 1140/860 RPM.
- Explosion proof motors are available for some units, contact factory for details.
- These optional motors cannot use an FSC.

Belt Drive

Single-phase motors:

- Open drip motors from 1/6 to 1-1/2 HP.
- Two-speed, motors in 1725/1140 RPM, from 1/6 to 1 HP.
- TEFC and Class 1, Group D, explosion proof motors from 1/4 to 1 HP.

Three-phase motors:

- Three-phase ODP motors from 1/4 to 10 HP.
- Two-speed, two winding motors in 1725/1140 RPM, from 1/3 to 5 HP.
- TEFC and Class 1, Group D, explosion proof motors from 1/4 to 10 HP.
- Variable Frequency Drive (VFD) compatible motors are available, contact factory for details.

All single-phase and three-phase, single speed, open drip motors listed in performance tables are shipped factory installed.

Optional Coatings

Lorenized® is an electrostatically applied, baked polyester powder coating. Each component shall be subject to a five stage environmentally friendly wash system, followed by a minimum 2 mil thick baked powder finish. Coating must exceed 1,000 hour salt spray under ASTM B117 test method.

Cook Epoxy Powder is an electrostatically applied, baked epoxy powder coating. Final coating thickness is 2.5 - 3.5 mils. For outdoor applications an optional UV resistant topcoat is available to prevent cosmetic chalking of the coating.

Cook Phenolic Epoxy Powder is an electrostatically applied, baked phenolic epoxy powder coating. Final coating thickness is 2 - 4 mils. For outdoor applications an optional UV resistant topcoat is required to prevent deterioration of the coating.

Cook Easy Clean Powder is an electrostatically applied, baked modified epoxy silicone powder producing a high temperature "non-stick" coating. Final coating thickness is 1.3 - 1.7 mils.

Air Dry Phenolic (Heresite VR-504) is a conventional spray applied phenolic resin coating. Final coating thickness is 4 - 6 mils. For outdoor applications an optional UV resistant topcoat (Heresite UC-5500) is required to prevent deterioration of the coating.

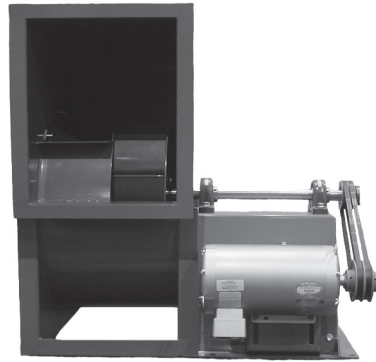
Refer to the corrosion resistance guide in the Compute-A-Fan software for a listing of the coatings above and their resistance to a variety of chemicals. Additional special coatings are available.

OTHER AVAILABLE PRODUCTS

Visit lorencook.com to view our complete line of products!



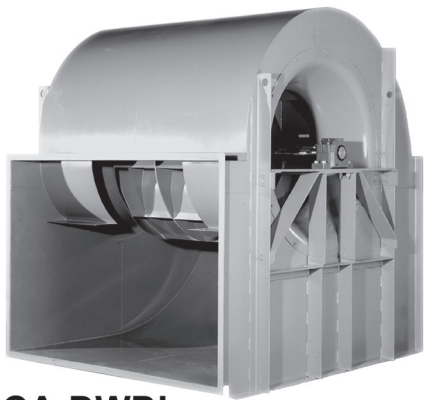
ACE



CA-SWSI



QMX



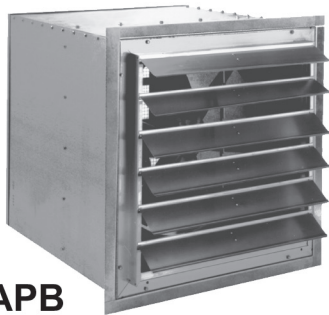
CA-DWDI



CVB



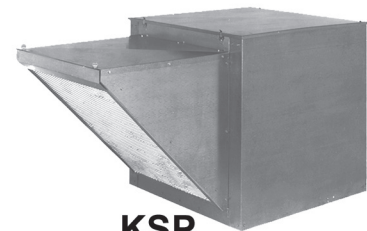
SQN



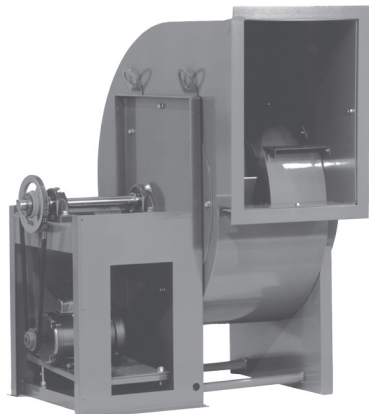
APB



IMH



KSP



CPS



XLWH



VCR



LOREN COOK COMPANY

2015 E. DALE STREET
SPRINGFIELD, MO 65803-4637
417.869.6474
FAX 417.862.3820
lorencook.com