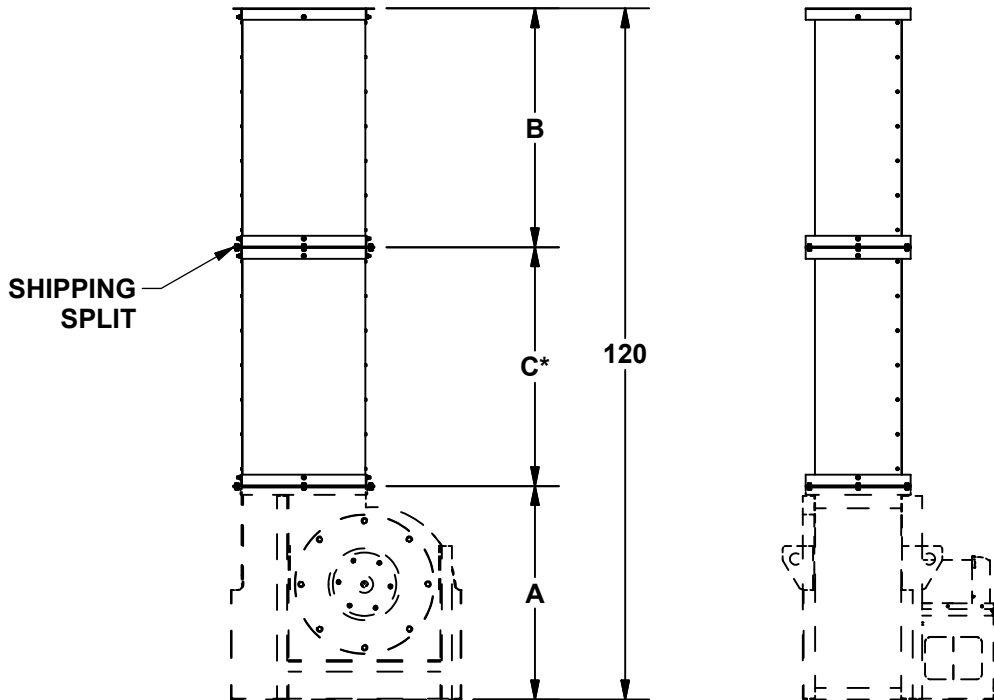


MARK: _____
 PROJECT: _____
 DATE: _____

Accessory Data Sheet
CA/CF SWSI
All Arrangements
Class I & II
Sizes 120 thru 600



DIMENSION DATA

Size	A	B	C	Stack Wt.
120	23 5/8	48 3/16	48 3/16	28
135	27 5/8	46 3/16	46 3/16	30
150	28 3/16	45 7/8	45 7/8	33
165	31 1/2	44 1/4	44 1/4	36
180	33 3/4	43 1/8	43 1/8	37
195	37 1/16	41 7/16	41 7/16	39
210	39 3/8	40 5/16	40 5/16	41
225	42 5/8	38 11/16	38 11/16	42
245	46 3/8	36 13/16	36 13/16	46
270	50 1/2	34 3/4	34 3/4	48
300	56 1/8	31 15/16	31 15/16	50
330	61 5/8	58 3/8	-	88
365	67 11/16	52 5/16	-	88
402	74 15/16	45 1/16	-	82
445	82 9/16	37 7/16	-	82
490	90 7/16	29 9/16	-	75
540	99 3/4	20 1/4	-	65
600	110 15/16	9 1/16	-	45

STANDARD CONSTRUCTION FEATURES:

Corrosion resistant aluminum construction - Designed to withstand 125 mph wind**

*One piece stack for sizes 330 thru 600. Stack weight includes hardware and all necessary components

**Wind Rating Dependant on Adequate Mounting Structure. Refer to I.O.M Manual.

ALL DIMENSIONS IN INCHES. WEIGHTS IN LBS.