



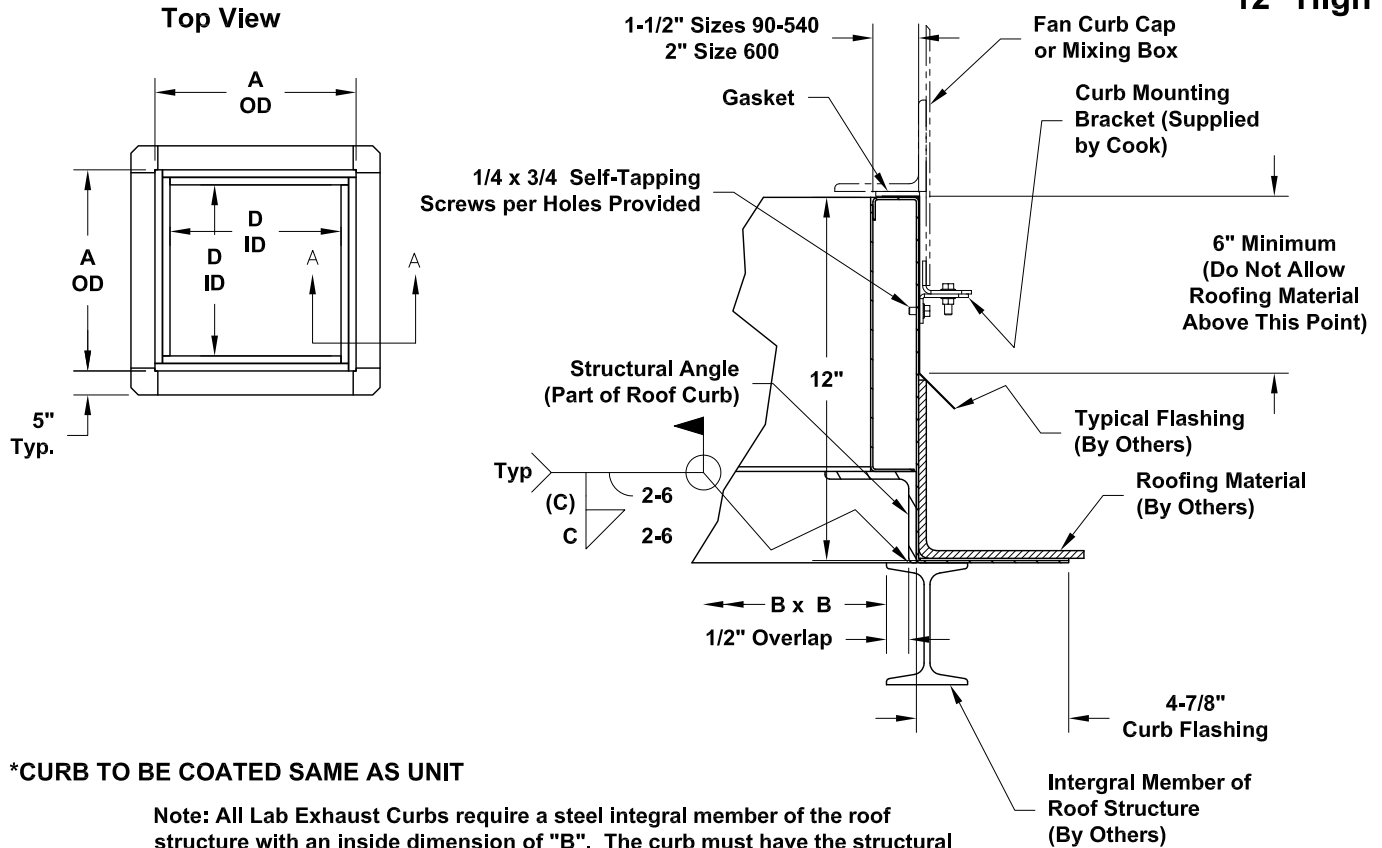
DATE: \_\_\_\_\_

PROJECT: \_\_\_\_\_

LOCATION: \_\_\_\_\_

## Coated Steel Lab Exhauster Curb QMXLE, QMXHPLE, QMXVP QMXHPVP, QMXVPA, QMXHPVPA Single (1x1) Configuration

### 12" High



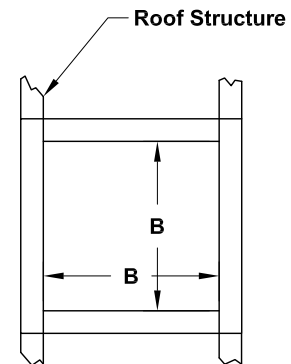
**\*CURB TO BE COATED SAME AS UNIT**

Note: All Lab Exhaust Curbs require a steel integral member of the roof structure with an inside dimension of "B". The curb must have the structural angle field welded to the steel roof structure. Steel roof structure to be determined by the engineer of record.

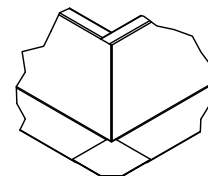
### DIMENSION DATA

Size	A	B	C	D	Curb Gauge	Approx. Curb Wt.
90	27-3/16	25-1/2	1/4	21	12	142
120	27-3/16	25-1/2	1/4	21	12	142
135	27-1/8	25-7/16	1/4	20-15/16	12	142
150	29-1/8	27-7/16	1/4	22-15/16	12	154
165	31-1/8	29-7/16	1/4	24-15/16	12	164
180	33-1/8	31-7/16	1/4	26-15/16	12	176
202	36-15/16	35-1/4	1/4	30-3/4	12	197
225	40-15/16	39-1/4	1/4	34-3/4	12	218
245	42-15/16	41-1/4	1/4	36-3/4	12	229
270	46-15/16	45-1/4	1/4	40-3/4	12	250
300	50-15/16	49-1/4	1/4	44-3/4	12	272
330	54-13/16	53-1/8	1/4	48-5/8	12	293
365	60-3/4	59-1/16	1/4	54-9/16	12	326
402	65-5/8	63-15/16	1/4	59-7/16	12	352
445	72-5/8	70-15/16	1/4	66-7/16	12	390
490	78-1/2	76-1/2	3/8	72-1/4	10	564
540	85-3/8	83-3/8	3/8	79-1/8	10	614
600	94-3/8	92-1/4	3/8	88	7	842

ALL DIMENSIONS IN INCHES. WEIGHTS IN LBS.,



Roof Opening



Curb Corner