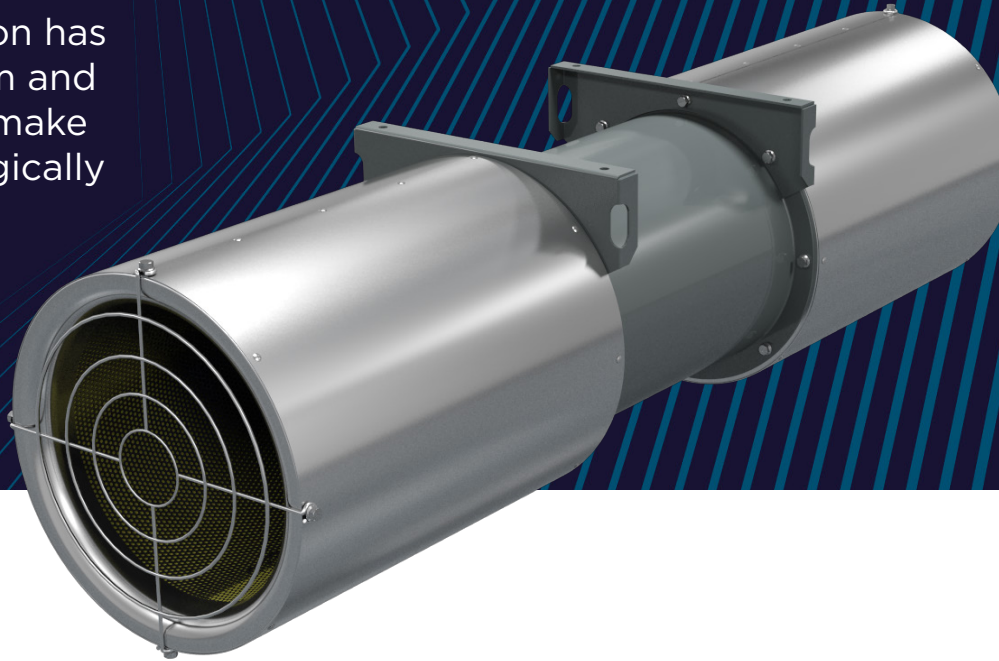


JetStream

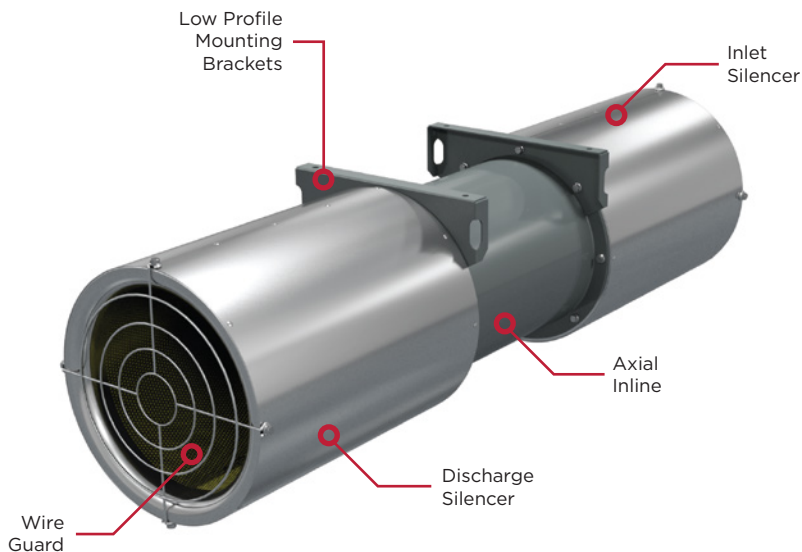
Ventilate your parking facility, quietly and efficiently!

Ductwork in garage ventilation has its drawbacks. Low headroom and closely spaced beams often make ductwork impractical. Strategically placed JetStream fans push or pull the air through the entire structure, sweeping it free of CO and other noxious gases.

Ductless
Bi-directional
Jet Fan



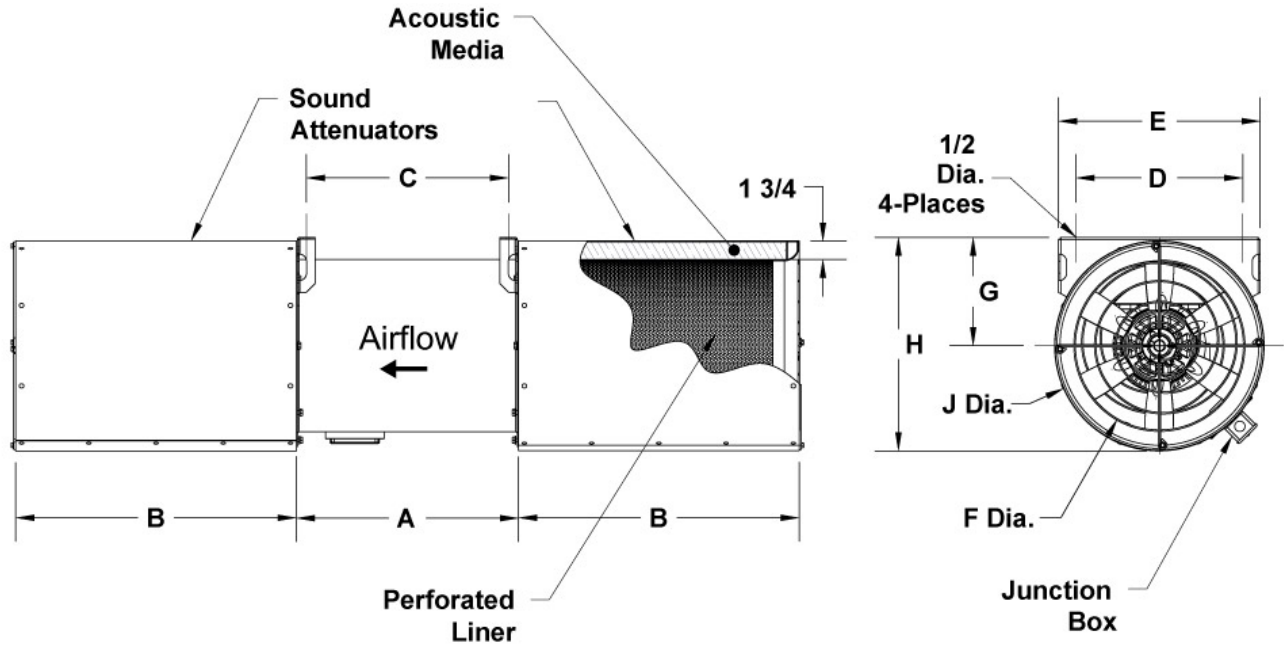
Standard Features:



- At the heart of the JetStream fan is a tube axial fan with a high efficiency cast aluminum propeller
- Direct drive for efficiency and reduced maintenance
- Compact design
- Flexible performance
- Low profile mounting brackets
- Inlet and outlet silencers for quiet operation
- UL Listed for smoke exhaust in emergency situation
- Available in three compact sizes with a wide range of performances



Contact your **Cook Representative** or visit lorencook.com for more information!

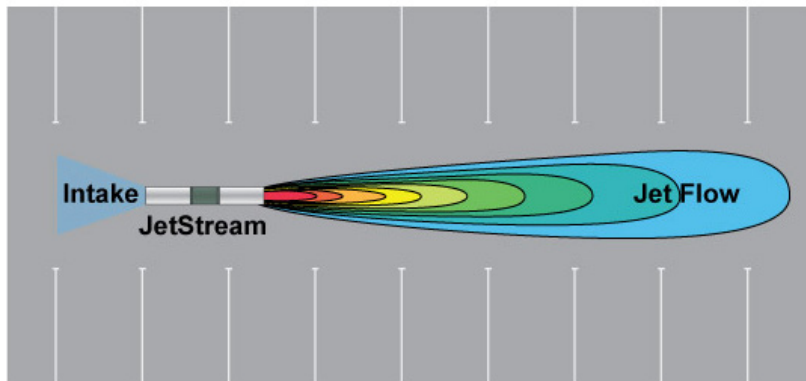


DIMENSION DATA

Size	A	B	C	D	E	F	G	H	J	Unit Wt.
31	19	20 1/2	17 5/16	12 1/4	15 3/8	12 1/2	8 3/8	16	16	107
36	19	24	17 5/16	14 1/4	17 7/16	14 1/2	9 1/4	17 7/8	18	133
41	22	26	20 5/16	16 1/4	19 1/2	16 1/2	10	19 5/8	20	174

ALL DIMENSIONS IN INCHES. WEIGHTS IN LBS. LESS MOTOR

Performance Data:



How Does it Work?

Extensive ductwork in garage ventilation has its drawbacks. Low headroom and closely spaced beams often make ductwork impractical. Strategically placed Jet fans push or pull the air through the entire structure, sweeping it free of CO and other noxious gases.