

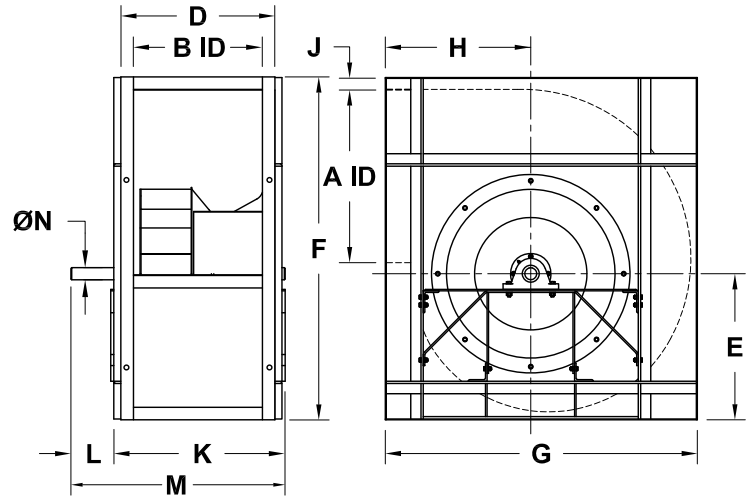
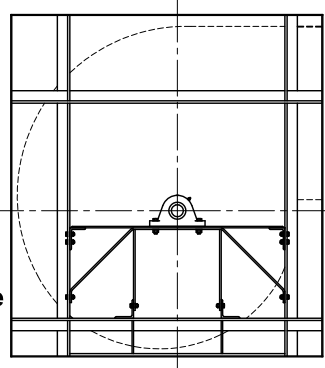
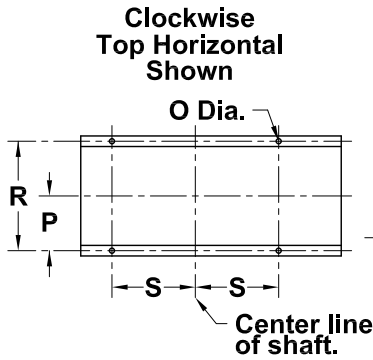
MARK: \_\_\_\_\_

PROJECT: \_\_\_\_\_

DATE: \_\_\_\_\_



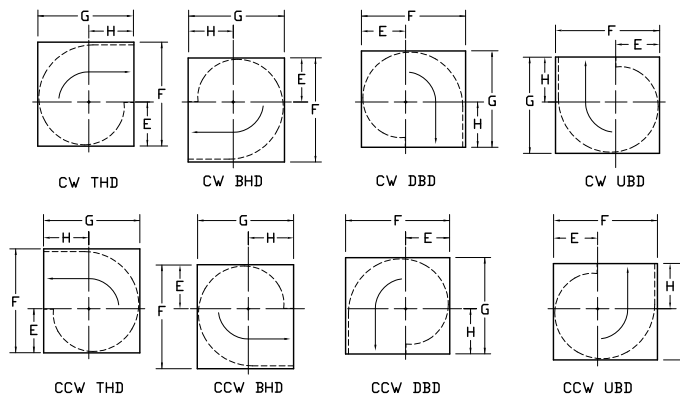
## Airfoil Centrifugal Blower Arrangement 3



### DIMENSION DATA

Size	A	B	D	E	F	G	H	J	K	L	M	N		
												Class I	Class II	Class III
120	13-1/8	9-3/16	13-3/16	10-3/4	25-3/4	22-3/4	10-3/8	2	15-7/8	3	18-7/8	1	1	1-3/16
135	14-3/4	10-5/16	14-5/16	12	28-3/4	25-1/2	11-5/8	2	17	3	20	1	1	1-3/16
150	16-7/16	11-7/16	15-7/16	13-1/4	31-5/8	28-1/8	12-7/8	2	18-1/8	3	21-1/8	1	1-3/16	1-7/16
165	18-1/16	12-5/8	16-5/8	14-3/8	34-3/8	30-7/8	14-1/4	2	19-5/16	4	23-15/16	1	1-3/16	1-7/16
180	19-11/16	13-3/4	17-3/4	15-5/8	37-1/8	33-5/8	15-1/2	2	20-7/16	4-1/2	24-15/16	1-3/16	1-7/16	1-11/16
195	21-5/16	14-15/16	18-15/16	16-3/4	40	36-1/4	16-3/4	2	22-11/16	4-1/2	27-3/16	1-7/16	1-7/16	1-11/16
210	23	16-1/16	20-1/16	18	42-7/8	39-1/8	18-1/8	2	23-13/16	5	28-13/16	1-7/16	1-7/16	1-11/16
225	24-5/8	17-3/16	21-3/16	19-1/4	45-3/4	41-3/4	19-3/8	2	24-15/16	5	29-15/16	1-7/16	1-7/16	1-11/16
245	26-13/16	18-3/4	22-3/4	20-7/8	49-1/2	45-3/8	21-1/8	2	26-1/2	5-1/2	32	1-7/16	1-11/16	1-15/16
270	29-9/16	20-5/8	24-5/8	23-3/8	54-3/4	49-7/8	23-1/4	2	28-3/8	6	34-3/8	1-7/16	1-11/16	1-15/16
300	32-13/16	22-15/16	26-15/16	25-3/8	60	55-3/8	25-7/8	2	30-11/16	6-1/2	37-3/16	1-11/16	1-15/16	2-3/16
330	36-1/8	25-1/4	29-1/4	27-7/8	65-3/4	60-3/4	28-3/8	2	33	7	40	1-11/16	2-3/16	2-3/16
365	39-15/16	27-7/8	31-7/8	30-5/8	72-3/8	67	31-3/8	2	35-5/8	7-1/2	43-1/8	1-15/16	2-7/16	2-7/16
402	44-1/16	30-3/4	36-3/4	33-5/8	80-3/8	73-7/8	34-5/8	3	38-5/8	8	46-5/8	1-15/16	2-7/16	2-11/16
445	48-11/16	34	40	37-1/8	88-1/2	81-1/2	38-1/4	3	41-7/8	8-1/2	50-3/8	1-15/16	2-11/16	2-15/16
490	53-5/8	37-7/16	43-7/16	40-3/4	97	89-3/4	42-1/4	3	46-5/16	9	55-5/16	2-3/16	2-11/16	2-15/16
540	59-1/16	41-1/4	47-1/4	44-7/8	106-5/8	98-3/4	46-1/2	3	52-1/8	9-1/2	61-5/8	3-7/16	2-15/16	3-7/16
600	65-5/8	45-13/16	51-13/16	49-3/4	118	109-5/8	51-5/8	3	56-11/16	10	66-11/16	2-11/16	3-7/16	3-15/16

Size	O	P	R	S	Ship Wt * LBS.
120	11/16	5-23/32	11-7/16	7-1/2	169
135	11/16	6-9/32	12-9/16	8-1/2	210
150	11/16	6-27/32	13-11/16	9	254
165	11/16	7-7/16	14-7/8	10	302
180	11/16	8	16	11	354
195	11/16	8-19/32	17-3/16	11-1/2	409
210	13/16	9-5/32	18-5/16	12	468
225	13/16	9-23/32	19-7/16	12-1/2	531
245	13/16	10-1/2	21	13-1/2	620
270	13/16	11-7/16	22-7/8	15	739
300	13/16	12-19/32	25-3/16	16-1/2	896
330	13/16	13-3/4	27-1/2	18	1065
365	13/16	15-1/16	30-1/8	20	1279
402	1-1/16	17-1/8	34-1/4	22	1525
445	1-1/16	18-3/4	37-1/2	24	1834
490	1-1/16	20-15/32	40-15/16	26-1/2	2186
540	1-1/16	22-3/8	44-3/4	29	2608
600	1-1/16	24-21/32	49-5/16	32	3159



ALL DIMENSIONS IN INCHES. WEIGHTS IN LBS., LESS MOTOR.  
\*BASED ON CLASS I CONSTRUCTION.