

SEISMIC CERTIFICATION



All Cook fans shown here have been tested to exceed spectral response accelerations covering the most severe seismic conditions anywhere in the United States.

SHAKE TABLE TESTED

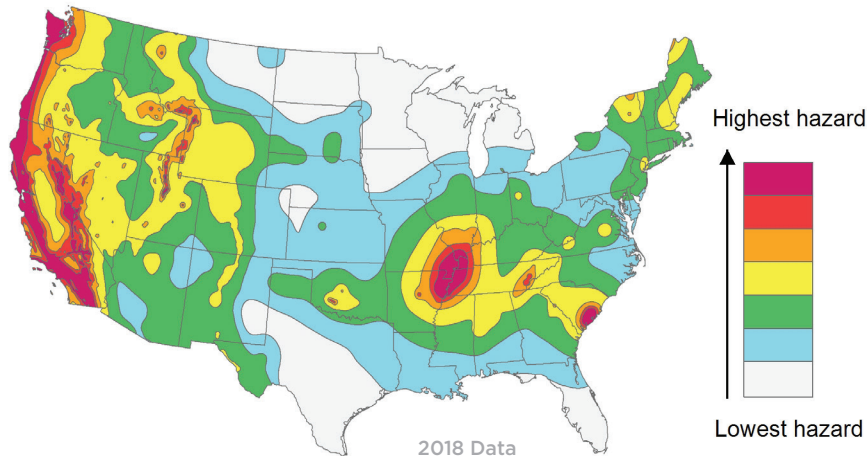
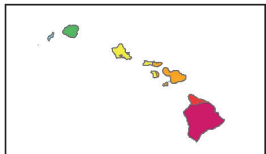
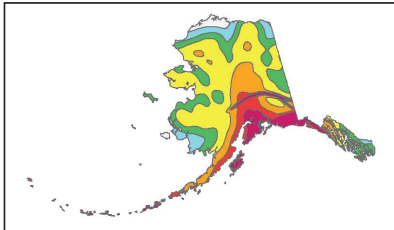
Several popular Cook models have been shake table tested to a spectral response acceleration ranging to 2.5G's (SDS = 2.50). These tests were conducted in accordance with the criteria specified in ICC-ES AC156.

The tests have been accepted by the California Office of Statewide Health Care Planning and Development (OSHPD), now known as California Department of Health Care Access and Information (HCAI), as part of the pre-approval of these products. This agency is the only state or federal organization that pre-approves mechanical equipment as seismically sound.

All inline fans have been tested horizontally, in both ceiling hung and base mounted configurations. All roof mounted products have been tested with the unit and roof curb as a complete assembly.



USGS NATIONAL SEISMIC HAZARD MAP



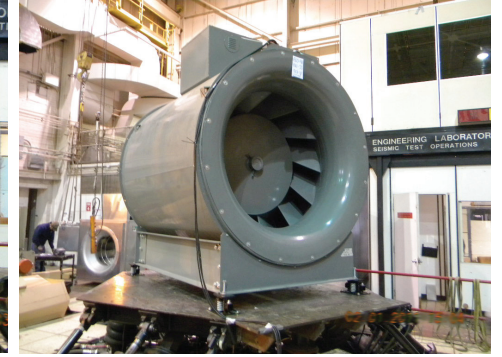
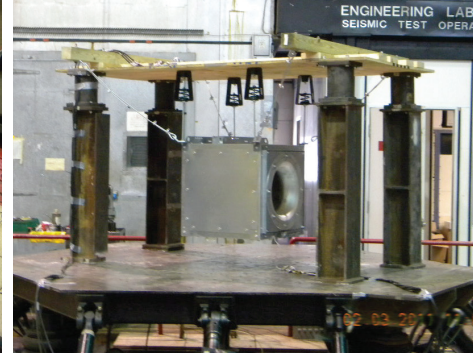
OSHPD PRE-APPROVAL NUMBER

Exhaust Fans: ACRUD ² , ACRUB, ACSC, VCR & VCRD ²	OSP-0033
Centrifugal Blowers: CPV, CPV-EC, CPS, CPS-A, CA and CF: Arr. 9, 10 (Sizes 120-540)	OSP-0102
Supply Fans: ASP	OSP-0122
Inline Fans: QMX ¹ , QMX-HP ¹ , QMX-XP ¹ , SQN-D ³ , SQN-B & SQN-HP	OSP-0219
Laboratory Fans: QMX-VP/QMXHP-VP (Sizes 90 -270)	OSP-0442

¹Level 2 only, ²Sizes 70 - 300, ³Sizes 70 -165

SEISMIC SIMULATION

MULTI-AXIS SHAKE TABLE TESTING




SEISMIC PRODUCT LABELS


 **LOREN COOK COMPANY**
Springfield, MO #181260

SEISMICALLY QUALIFIED EXHAUST FAN
SHAKE TABLE TESTED PER AC156
OSHPD OSP-0033
SDS=1.93g's Z/H=1 I_p =1.5 

 **LOREN COOK COMPANY**
Springfield, MO #181262


SEISMICALLY QUALIFIED SUPPLY FAN
SHAKE TABLE TESTED PER AC156
OSHPD OSP-0122
SDS=2.28g's Z/H=1 I_p =1.5 


 **LOREN COOK COMPANY**
Springfield, MO #181261

SEISMICALLY QUALIFIED BLOWER
SHAKE TABLE TESTED PER AC156
OSHPD OSP-0102
SDS=2.28g's Z/H=1 I_p =1.5 

 **LOREN COOK COMPANY**
Springfield, MO #181263

SEISMICALLY QUALIFIED EXHAUST FAN
SHAKE TABLE TESTED PER AC156
OSHPD OSP-0442
SDS=2.0g's Z/H=1 I_p =1.5 

 **LOREN COOK COMPANY**
Springfield, MO #181263

SEISMICALLY QUALIFIED INLINE FAN
SHAKE TABLE TESTED PER AC156
OSHPD OSP-0219
SDS=2.0g's Z/H = 1.0 I_p =1.5
SDS=2.5g's Z/H = 0.0 I_p =1.5 



2015 E. Dale St. Springfield, MO 65803 | 417-869-6474 | Fax: 417-862-3820 | lorencook.com | Seismic Certification Flier

August 2024 | B50086-008