



COOK

TDBX

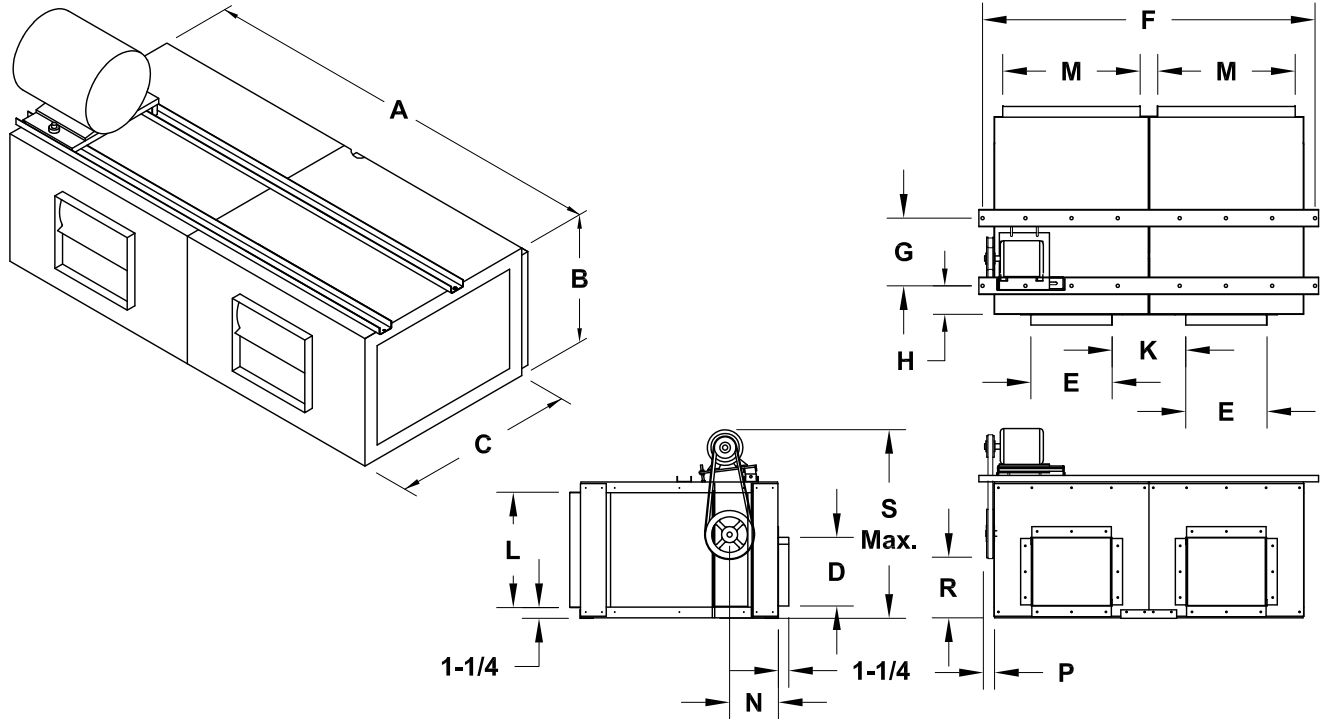
DATE: _____

PROJECT: _____

LOCATION: _____



**Twin Duct Blower
Horizontal Ceiling Mount
External Belt Drive**



DIMENSION DATA

| Size | A | B | C | D O.D. | E O.D. | F | G | H | K | L O.D. | M O.D. | N | P | R | S | Ship Wt. |
|--------|--------|----------|--------|-----------|-----------|--------|--------|---------|--------|-----------|-----------|---------|-------|----------|---------|-------------|
| TDB-8 | 36-5/8 | 15-7/16 | 23 | 7-7/8 | 9-1/4 | 38 | 9-5/8 | 2-1/8 | 9-1/4 | 13-7/16 | 16-1/8 | 6-3/8 | 2-3/8 | 8-1/4 | 24-9/16 | 135 |
| TDB-9 | 42-5/8 | 18-1/8 | 25-3/4 | 10-5/16 | 11-7/8 | 44 | 11-3/4 | 2-1/2 | 9-5/8 | 16-1/8 | 19-1/8 | 7-3/16 | 2-3/8 | 9-7/8 | 27-1/4 | 175 |
| TDB-10 | 45-1/8 | 20-1/8 | 28-1/4 | 11-3/8 | 13-1/8 | 46-1/2 | 13-3/8 | 2-1/2 | 9-5/8 | 18-1/8 | 20-3/8 | 7-15/16 | 4 | 10-7/8 | 30-1/16 | 225 |
| TDB-13 | 54-5/8 | 23-3/16 | 31-1/4 | 13-7/16 | 15-5/8 | 56 | 16-1/8 | 2-1/2 | 11-7/8 | 21-3/16 | 25-1/8 | 9-1/8 | 4 | 12-23/32 | 35-9/16 | 350 |
| TDB-15 | 65-3/8 | 26-15/16 | 36-1/4 | 15-7/8 | 18-5/8 | 66-3/4 | 19-1/2 | 2-1/2 | 14-1/4 | 24-15/16 | 30-1/2 | 10-1/2 | 4 | 14-27/32 | 39-5/16 | 425 |
| TDB-18 | 82-3/8 | 31-7/8 | 44-3/4 | 18-7/8 | 21-7/8 | 83-3/4 | 24 | 2-11/16 | 19-1/2 | 29-7/8 | 39 | 12-3/8 | 4 | 17-9/16 | 44-1/4 | 750 |

ALL DIMENSIONS IN INCHES. WEIGHTS IN LBS.

STANDARD CONSTRUCTION FEATURES:

Galvanized steel housing - Permanently lubricated ball bearing motors - Blower is vibration isolated from the housing - Static resistant belts - Bearings rated at 200,000 hours average life - Adjustable pitch drives through 5 hp motor - Corrosion resistant fasteners - Removable side access panel - Motor out of the airstream - Horizontal hanging brackets - All fans factory adjusted to specified fan RPM.

ACCESSORIES

1. SLIDE-OUT FILTER BOX
2. NEMA 1 DISCONNECT SWITCH
3. BELT GUARD
4. AUTO BACKDRAFT DAMPER

| QTY | MARK | CATALOG NUMBER | FAN INFORMATION | | | MOTOR INFORMATION | | | | | ACCESSORIES | | | | | |
|-----|------|----------------|-----------------|----|-----|-------------------|-------|----|----|------|-------------|--|--|--|--|--|
| | | | CFM | SP | RPM | HP | VOLTS | HZ | PH | TYPE | | | | | | |
| | | | | | | | | | | | | | | | | |

LARGEST MOTOR SHIPPED MOUNTED: ODP (OPEN DRIP-PROOF) 5 HP; 2 SP (2 SPEED) 2 HP;
X-PRF (EXPLOSION PROOF) 2 HP; TEFC (TOTALLY ENCLOSED FAN COOLED) 2 HP.

DB005R01