



COOK

AVAB

DATE: _____

PROJECT: _____

LOCATION: _____



Adjustable Pitch Vane Axial Horizontal Ceiling Mount Belt Drive Arrangement 9

DIMENSION DATA

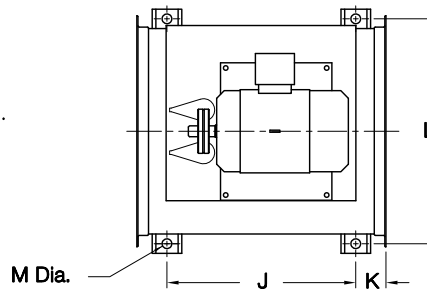
Size	A	B	C	D	E	F	G	H	J	K	L
35	35-1/2	39-7/8	38	3/16	43	9/16	12	47-7/8	34-1/8	4-7/16	39-5/8
39	39-3/8	43-15/16	41-7/8	1/4	43	9/16	12	49-7/8	34-1/8	4-7/16	43-5/8
44	44-1/8	49-5/8	47-3/8	1/4	47	9/16	12	53-1/4	36-1/4	5-3/8	49-3/8
49	49-1/4	54-3/4	52-1/2	1/4	47	9/16	12	55-3/4	36-1/4	5-3/8	54-1/2
57	57-1/8	62-5/8	59-7/8	1/4	61	9/16	12	65-3/4	50-1/4	5-3/8	62-3/8
63	63	68-1/2	66-1/4	1/4	61	11/16	16	68-5/8	48	6-1/2	69-1/4
71	70-7/8	77-5/8	75	3/8	72	11/16	16	72-3/4	59	6-1/2	77-3/8
79	78-3/4	85-9/16	82-7/8	3/8	72	11/16	16	76-5/8	59	6-1/2	85-1/4

Size	M	ODP Max. Mtr. Frame	Ship Wt. less Mtr.
35	11/16	326T	663
39	11/16	365T	858
44	13/16	445T	1035
49	13/16	445T	1420
57	13/16	445T	1860
63	1-1/16	445T	2109
71	1-1/16	445T	3397
79	1-1/16	445T	3747

ALL DIMENSIONS IN INCHES. WEIGHTS IN LBS.

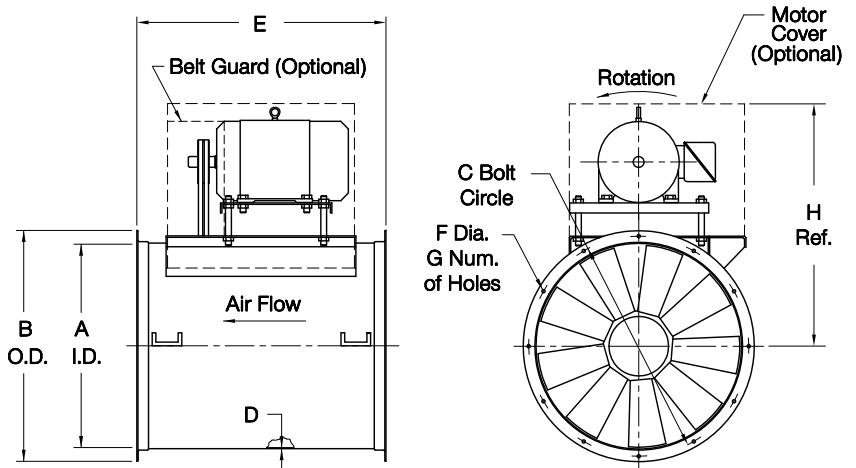
STANDARD CONSTRUCTION FEATURES:

All aluminum adjustable pitch prop -
Minimum 3/16" Lorenized steel housing
with integral straightening vanes -
Extended lube lines - Regreasable
bearings in cast pillow block housing.



ACCESSORIES

1. INLET/OUTLET GUARD
2. INLET/OUTLET COMPANION FLANGE
3. VIBRATION ISOLATORS
4. INLET BELL
5. INLET/OUTLET CONE
6. INSPECTION DOOR
7. SOUND MUFLER
8. MOTOR COVER
9. BELT GUARD



LARGEST MOTOR SHIPPED MOUNTED: ODP (OPEN DRIP-PROOF) 25 HP; 2 SP (2 SPEED) 20 HP;
X-PRF (EXPLOSION PROOF) 20 HP; TEFC (TOTALLY ENCLOSED FAN COOLED) 20 HP.

VA101R03