



COOK

BDMI

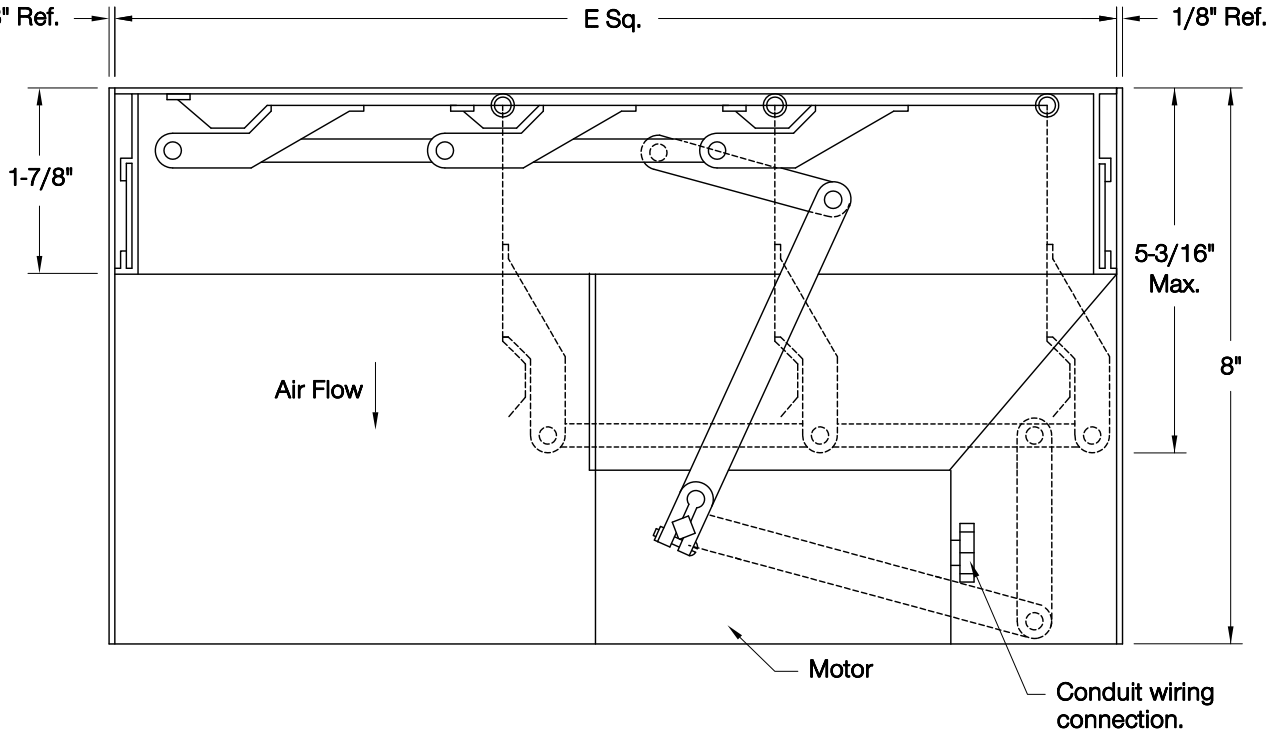
DATE: _____

Motorized Intake Backdraft Damper

PROJECT: _____

ASP/ASPT, KSP/KSPD, PR/TR Gravity Units

LOCATION: _____

**STANDARD CONSTRUCTION FEATURES:**

.020 aluminum blades - .060 aluminum frame -
 .080 aluminum wrapper - Aluminum hinge pins -
 Nylon bushings - Non-overloading motor.

DIMENSION DATA

Qty	Mark	KSP/KSPT ASP/ASPT Unit Size	PR/TR Unit Size	Cat. No.	E Sq.	Unit Wt.
		-	8	BDMI-12	11-3/4	7
		-	12	BDMI-14	13-3/4	8
		9	-	BDMI-18	17-3/4	10
		10	16	BDMI-22	21-3/4	12
		12,15	20	BDMI-26	25-3/4	14
		18	24	BDMI-30	29-3/4	16
		-	30	BDMI-36	35-3/4	22
		20	36	BDMI-42	41-3/4	26
		-	42	BDMI-48	47-3/4	31
		-	48	BDMI-54	53-3/4	37

ALL DIMENSIONS IN INCHES. WEIGHTS IN LBS.

NOTES:

Motors are available in 115, 230, or 460 voltage.
 Wood nailer must be supplied on 9-1/2" high curb.
 Max operating temperature 130°F (50°C).
 BDMI-36 and larger use two motors.

X0204R06