



# COOK

# QMXDLE/QMXHPDLE

MARK: \_\_\_\_\_  
 PROJECT: \_\_\_\_\_  
 DATE: \_\_\_\_\_

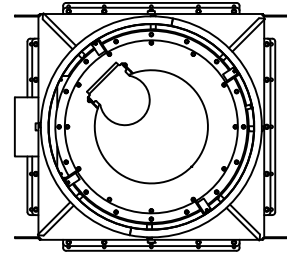


Laboratory Exhaust  
 Mixed-Flow Inline  
 Dual Access Direct Drive  
 with Isolation Box

### DIMENSION DATA

| Size | A         | B  | C        | D        | Unit Weight |      |
|------|-----------|----|----------|----------|-------------|------|
|      |           |    |          |          | STD         | HP   |
| 150  | 120       | 30 | 29 1/8   | 29 9/16  | 638         | 638  |
| 165  | 120       | 32 | 31 1/8   | 31 11/16 | 674         | 676  |
| 180  | 120       | 34 | 33 1/8   | 34 1/16  | 740         | 742  |
| 202  | 120       | 38 | 36 15/16 | 37 15/16 | 913         | 914  |
| 225  | 120       | 42 | 40 15/16 | 41 1/8   | 1060        | 1064 |
| 245  | 120       | 44 | 42 15/16 | 43 7/16  | 1186        | 1191 |
| 270  | 122 5/16  | 48 | 46 15/16 | 47       | 1333        | 1334 |
| 300  | 135 1/4   | 52 | 50 15/16 | 51 3/16  | 1570        | 1571 |
| 330  | 146 1/2   | 56 | 54 13/16 | 55 15/16 | 1813        | 1815 |
| 365  | 157 11/16 | 62 | 60 3/4   | 61 15/16 | 2181        | 2184 |
| 402  | 170 1/16  | 67 | 65 5/8   | 67 1/8   | 2746        | 2744 |
| 445  | 186 3/16  | 74 | 72 5/8   | 73 1/4   | 3554        | 3547 |
| 490  | 197 9/16  | 80 | 78 1/2   | 79 9/16  | 4776        | 4774 |

ALL DIMENSIONS IN INCHES, WEIGHTS IN LBS LESS MOTOR.  
 \* RECOMMENDED CURB OUTSIDE SQUARE DIMENSION.  
 \*\* ISOLATION BOX INSIDE SQUARE DIMENSION.  
 \*\*\* DIMENSION IS FROM THE BOTTOM OF THE CURB CAP TO THE TOP OF THE CURB.



### STANDARD CONSTRUCTION FEATURES:

High efficiency, non-overloading mixed-flow welded aluminum wheel - Minimum 14 gauge steel welded dual access housing - Welded aerodynamic straightening vanes - Hinged Discharge Damper with windband - Phenolic epoxy powder with UV protection (Light Gray) - Bolted access door - Lifting lugs - Fan drain - Reinforced curb cap - Stainless Steel hardware - Stainless Steel extended lube lines when applicable - NEMA 3R disconnect mounted and pre-wired - Designed to withstand 125 mph wind\*\*\*\*

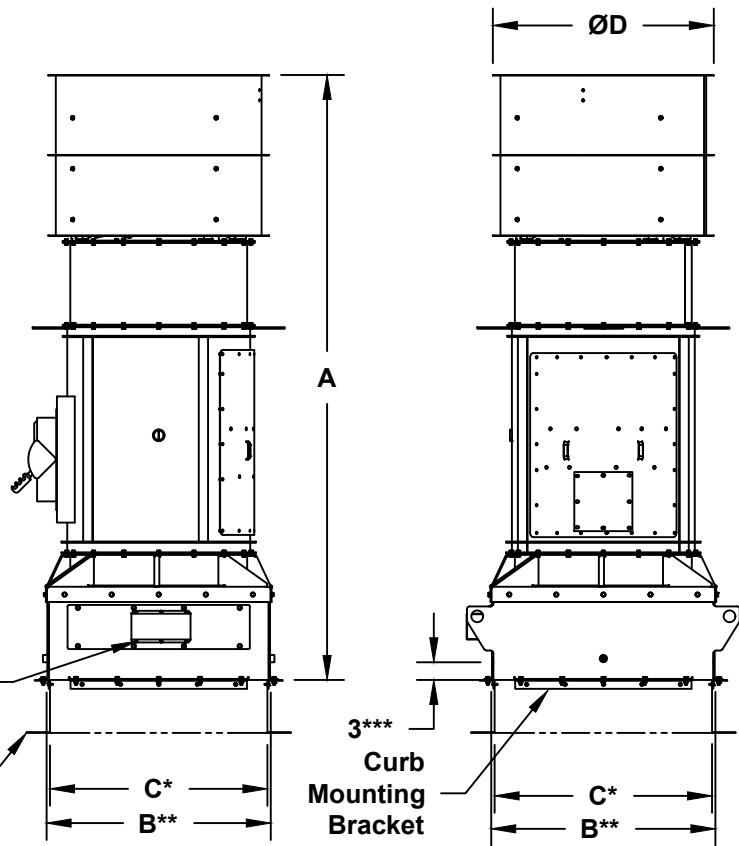
ISOLATION BOX: Single wall welded steel construction with inner angle frame - Bottom inlet location - Phenolic epoxy powder with UV protection (Light Gray) - Plenum drain - Painted aluminum gravity isolation damper - Stainless Steel hardware - Designed to withstand 125 mph wind\*\*\*\*

### OPTIONAL FEATURES SHOWN:

Heavy Duty Lab Exhaust Curb  
 Damper Actuator

Damper Actuator  
 Optional

Optional  
 Heavy Duty  
 Lab Exhaust  
 Curb



NOT INTENDED TO BE  
 SUPPORTED BY TRADITIONAL SHEETMETAL  
 ROOF CURB, BUT BY INTEGRAL  
 MEMBERS OF ROOF STRUCTURE.

\*\*\*\* WINDLOAD RATING DEPENDANT ON ADEQUATE  
 ATTACHMENT TO ROOF STRUCTURE.

TM084R00