

MARK: _____

PROJECT: _____

DATE: _____



Vari-Plume®
Laboratory Exhaust
Mixed-Flow Inline
Bifurcated Belt Drive
With Isolation Box

DIMENSION DATA

Size	A	B	C	D	E	Unit Weight	
						STD	HP
90	79	28	27 3/16	24 7/16	36 11/16	456	461
120	93 1/8	28	27 3/16	32 9/16	40 7/16	549	551
135	99 11/16	28	27 1/8	36 11/16	41 5/8	658	659
150	99	30	29 1/8	38 5/16	44 1/8	718	720
165	106 3/4	32	31 1/8	42 1/8	45 1/2	839	851
180	115 3/8	34	33 1/8	46	48	1017	1027
202	124 13/16	38	36 15/16	51 3/4	51 7/8	1250	1263
225	135 3/4	42	40 15/16	57 1/2	58	1433	1464
245	145 5/8	44	42 15/16	62 9/16	60 5/8	1683	1705
270	142 5/8	48	46 15/16	66 3/8	64 5/8	1959	1975
300	157 11/16	52	50 15/16	73 3/4	69 7/16	2338	2358
330	170	56	54 13/16	81 1/8	75 15/16	2850	2876
365	184-15/16	62	60 3/4	89 3/4	81 5/8	3676	3732
402	205	67	65 5/8	98 15/16	89 5/16	4472	4530
445	218-7/16	74	72 5/8	109 3/8	96 1/8	5319	5368
490	237-1/16	80	78 1/2	120 7/16	104 1/16	8446	8521
540	255	87	85 3/8	132 3/4	111 3/8	9817	9957
600	285-1/8	96	94 3/8	147 1/2	120 5/16	11698	11872

ALL DIMENSIONS IN INCHES, WEIGHTS IN LBS LESS MOTOR.
 * RECOMMENDED CURB OUTSIDE SQUARE DIMENSION.
 ** ISOLATION BOX INSIDE SQUARE DIMENSION.
 *** DIMENSION IS FROM THE BOTTOM OF THE CURB CAP TO THE TOP OF THE CURB.

STANDARD CONSTRUCTION FEATURES:

High efficiency, non-overloading mixed-flow welded wheel - Minimum 14 gauge steel welded bifurcated housing - Welded aerodynamic straightening vanes - Double concentric accelerator with welded aluminum induction nozzle and windband - Phenolic epoxy powder with UV protection (Light Gray) - L10/40k Concentric locking regreasable bearings - Bolted access door - Lifting lugs - Fan drain - Weather cover - Reinforced curb cap - Stainless Steel shaft - Stainless Steel hardware - Stainless Steel extended lube lines - NEMA 3R disconnect mounted and pre-wired - 1.5 Service factor drives - Designed to withstand 125 mph wind****

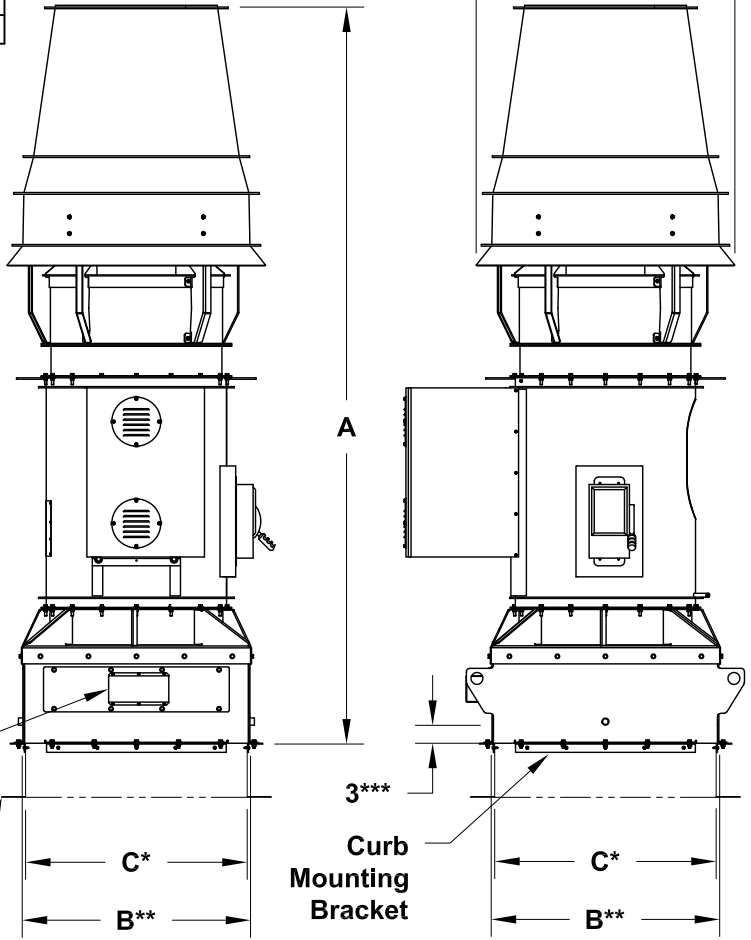
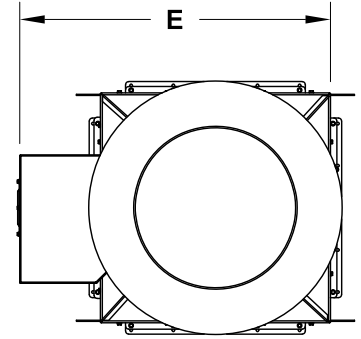
ISOLATION BOX: Single wall welded steel construction with inner angle frame - Bottom inlet location - Phenolic epoxy powder with UV protection (Light Gray) - Plenum drain - Painted aluminum gravity isolation damper - Stainless Steel hardware - Designed to withstand 125 mph wind****

OPTIONAL FEATURES SHOWN:

Heavy Duty Lab Exhaust Curb
 Damper Actuator

Optional Damper Actuator

Optional Heavy Duty Lab Exhaust Curb



NOT INTENDED TO BE SUPPORTED BY TRADITIONAL SHEETMETAL ROOF CURB, BUT BY INTEGRAL MEMBERS OF ROOF STRUCTURE.

**** WINDLOAD RATING DEPENDANT ON ADEQUATE ATTACHMENT TO ROOF STRUCTURE.