

MARK: \_\_\_\_\_

PROJECT: \_\_\_\_\_

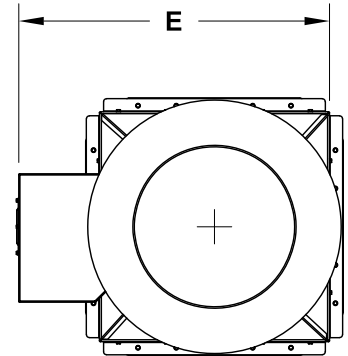
DATE: \_\_\_\_\_



**Vari-Plume®**  
**Laboratory Exhaust**  
**Mixed-Flow Inline**  
**Bifurcated Belt Drive**

**DIMENSION DATA**

Size	A	B	C	D	E	Unit Weight	
						STD	HP
90	66	28	27 3/16	23	36 11/16	312	317
120	72	28	27 3/16	28	40 7/16	391	394
135	77	28	27 1/8	28	41 5/8	471	424
150	88	30	29 1/8	36	44 1/8	512	523
165	91	32	31 1/8	36	45 1/2	595	620
180	98	34	33 1/8	43	48	751	771
202	105	38	36 15/16	50	51 7/8	921	943
225	114	42	40 15/16	50	58	1041	1087
245	122	44	42 15/16	61	60 5/8	1234	1275
270	131	48	46 15/16	61	64 5/8	1383	1419
300	149	52	50 15/16	74	69 7/16	1868	1908
330	155	56	54 13/16	74	75 15/16	2186	2246
365	176	62	60 3/4	89	81 5/8	3302	3482
402	184	67	65 5/8	89	89 5/16	3792	3895
445	203	74	72 5/8	89	96 1/8	4340	4440
490	221	80	78 1/2	101	104 1/16	6801	6931
540	239	87	85 3/8	101	111 3/8	7479	7619
600	262	96	94 3/8	101	120 5/16	8715	8842



ALL DIMENSIONS IN INCHES, WEIGHTS IN LBS LESS MOTOR

\* RECOMMENDED CURB OUTSIDE SQUARE DIMENSION.

\*\* CURB CAP INSIDE SQUARE DIMENSION.

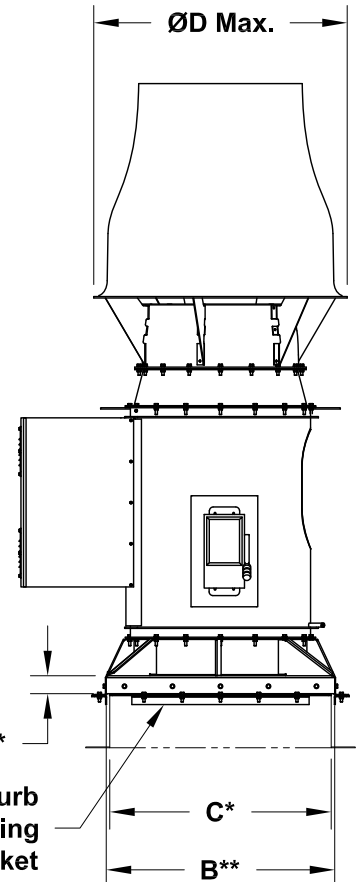
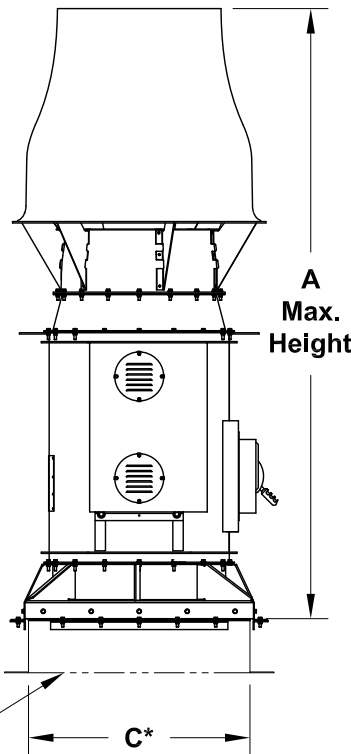
\*\*\* DIMENSION IS FROM THE BOTTOM OF THE CURB CAP TO THE TOP OF THE CURB.

**STANDARD CONSTRUCTION FEATURES:**

High efficiency, non-overloading mixed-flow welded wheel - Minimum 14 gauge steel welded bifurcated housing - Welded aerodynamic straightening vanes - Double concentric accelerator fiberglass reinforced plastic induction nozzle and windband - Phenolic epoxy powder with UV protection (Light Gray) - L10/40k Concentric locking regreasable bearings - Bolted access door - Lifting lugs - Fan drain - Weather cover - Reinforced curb cap - Inlet duct collar - Stainless Steel shaft - Stainless Steel hardware - Stainless Steel extended lube lines - NEMA 3R disconnect mounted and pre-wired - 1.5 Service factor drives - Designed to withstand 125 mph wind\*\*\*\*

**OPTIONAL FEATURES SHOWN:**

Heavy Duty Lab Exhaust Curb



NOT INTENDED TO BE SUPPORTED BY TRADITIONAL SHEETMETAL ROOF CURB, BUT BY INTEGRAL MEMBERS OF ROOF STRUCTURE.

\*\*\*\* WINDLOAD RATING DEPENDANT ON ADEQUATE ATTACHMENT TO ROOF STRUCTURE.

Optional  
**Heavy Duty  
 Lab Exhaust  
 Curb**

**Curb  
 Mounting  
 Bracket**