



COOK

QMXLE/QMXHPLE

MARK: _____

PROJECT: _____

DATE: _____



Laboratory Exhaust
Mixed-Flow Inline
Bifurcated Belt Drive
with 1x1 Mixing Box

DIMENSION DATA

Size	A	B	C	D	E	F	G Height	H	J Width	Unit Weight	
										STD	HP
90	120	28	27 3/16	21 3/8	36 11/16	38	10 9/16	8	19 3/4	722	727
120	120	28	27 3/16	25 5/8	40 7/16	39	12 13/16	8	19 3/4	812	814
135	120	28	27 1/8	27 3/4	41 5/8	40	14 13/16	8	18 9/16	1018	1020
150	120	30	29 1/8	29 9/16	44 1/8	43	16 9/16	8	20 9/16	1067	1069
165	120	32	31 1/8	31 11/16	45 1/2	46	18 5/16	8	22 9/16	1204	1217
180	120	34	33 1/8	34 1/16	48	48	19 1/16	8	24 9/16	1381	1391
202	125 13/16	38	36 15/16	37 15/16	51 7/8	54	22 9/16	8	28 9/16	1650	1663
225	134 3/4	42	40 15/16	41 1/8	58	59	22 9/16	9	30 9/16	1896	1927
245	146 1/16	44	42 15/16	43 7/16	60 5/8	62	24 13/16	9	32 9/16	2149	2170
270	155 5/16	48	46 15/16	47	64 5/8	67	26 9/16	9	36 9/16	2440	2456
300	171 1/16	52	50 15/16	51 3/16	69 7/16	72	29 13/16	9	40 9/16	2876	2896
330	185 3/4	56	54 13/16	55 15/16	75 15/16	78	33	9	44 1/2	3237	3263
365	203 3/16	62	60 3/4	61 15/16	81 5/8	86	35	11	46 3/8	4330	4386
402	222	67	65 5/8	67 1/8	89 5/16	94	41 1/4	11	50 5/16	5197	5255
445	248 1/8	74	72 5/8	73 1/4	96 1/8	106	47	13	53 5/16	6196	6245
490	271	80	78 1/2	79 9/16	104 1/16	117	57 1/4	13	59 1/8	9877	9952

ALL DIMENSIONS IN INCHES. WEIGHTS IN LBS., LESS MOTOR.
 * RECOMMENDED CURB OUTSIDE SQUARE DIMENSION.
 ** MIXING BOX INSIDE SQUARE DIMENSION.
 *** DIMENSION IS FROM THE BOTTOM OF THE CURB CAP TO THE TOP OF THE CURB.

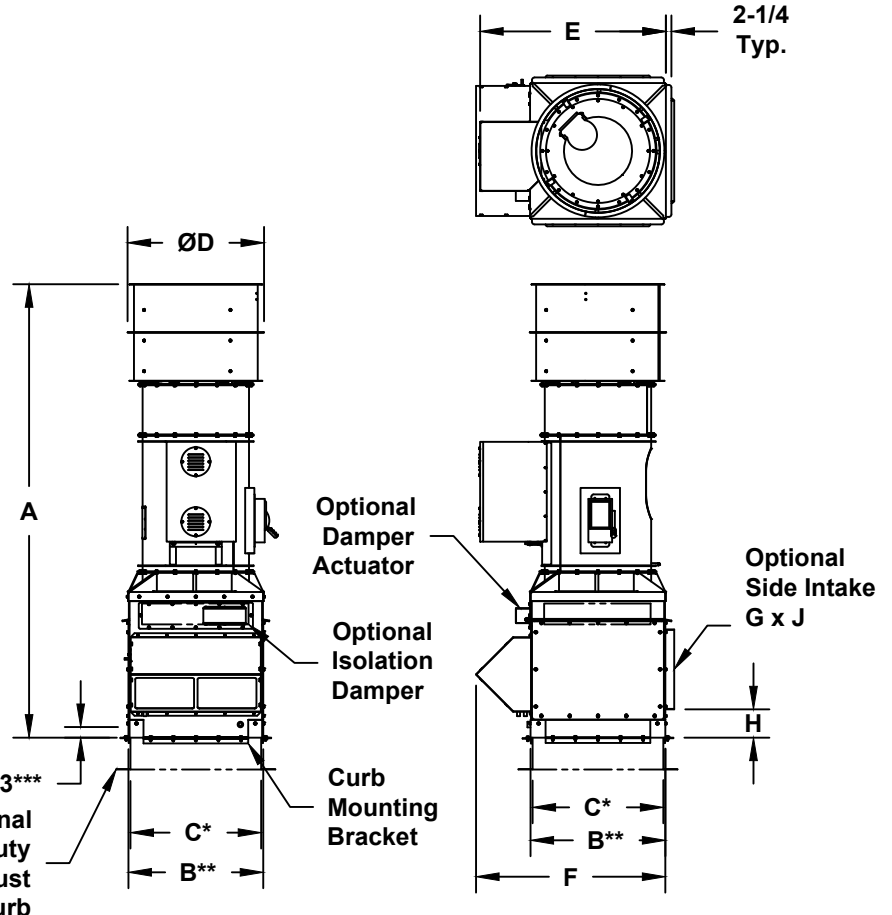
STANDARD CONSTRUCTION FEATURES:

High efficiency, non-overloading mixed-flow welded wheel - Minimum 14 gauge steel welded bifurcated housing - Welded aerodynamic straightening vanes - Hinged Discharge Damper - Phenolic epoxy powder with UV protection (Light Gray) - L10/40k Concentric locking regreasable bearings - Bolted access door - Lifting lugs - Fan drain - Weather cover - Reinforced curb cap - Stainless Steel shaft - Stainless Steel hardware - Stainless Steel extended lube lines - NEMA 3R disconnect mounted and pre-wired - 1.5 Service factor drives - Designed to withstand 125 mph wind****

BYPASS PLENUM: Single wall welded steel construction with inner angle frame - Bottom inlet location - Phenolic epoxy powder with UV protection (Light Gray) - Plenum drain - Bolted access door - Painted aluminum bypass damper with manual hand quadrant - Weather hood - Stainless steel birdscreen - Stainless Steel hardware - Designed to withstand 125 mph wind****

OPTIONAL FEATURES SHOWN:

Heavy Duty Lab Exhaust Curb
 Side Intake Opening
 Isolation Damper
 Damper Actuator



NOT INTENDED TO BE SUPPORTED BY TRADITIONAL SHEETMETAL ROOF CURB, BUT BY INTEGRAL MEMBERS OF ROOF STRUCTURE.

**** WINDLOAD RATING DEPENDANT ON ADEQUATE ATTACHMENT TO ROOF STRUCTURE.